

DECLARATION OF DAVID MATTSON

I, David Mattson, declare as follows:

1. My 30 plus years of professional training and experience have focused on the ecology and management of grizzly bears and mountain lions as well as on the role of science in natural resources policy. I have a Bachelor's Degree in Forest Management, an M.S. Degree in Forest Ecology, and a Ph.D. Degree in Wildlife Ecology from the University of Idaho. Prior to my retirement in 2013, I was Research Wildlife Biologist and Leader of the Colorado Plateau Research Station with the U.S. Geological Survey (USGS). I also held positions as Visiting Scholar at the Massachusetts Institute of Technology (MIT) and a related position as Western Field Director of the MIT-USGS Science Impact Collaborative. I currently hold positions as Lecturer and Senior Visiting Scientist at the Yale School of Forestry & Environmental Studies, Adjunct Faculty at Northern Arizona University, and Research Associate with the Northern Rockies Conservation Cooperative. I co-teach courses at Yale on, among other things, the conservation of large carnivores, large-scale conservation, and natural resources policy.

2. My investigations of Yellowstone's grizzly bears date back to 1979 when, beginning with that field season, I annually covered over 1500 miles on foot in the backcountry of the Yellowstone Ecosystem studying the habitat and behaviors of grizzly bears. My fieldwork in the Yellowstone Ecosystem continued through 1993, including a period from 1984-1993 when I held primary responsibility for investigating grizzly bear diet, habitat use, and relations with humans as a member of the Interagency Grizzly Bear Study Team. More recently, during 2003-2013, I led investigations of mountain lion ecology and demography in 7 different study areas in the southwestern United States. Specific to the content of this declaration, my investigations of the demography of populations of large carnivores have spanned 1990 through the present. I have authored or co-authored a number of publications of relevance to the demography of the Yellowstone grizzly bear population, including two papers on the effects of food variability and habituation to humans (Mattson et al. 1992; Pease and Mattson 1999), two papers on methods used for population monitoring (Mattson 1997; Mattson 1998), one paper on factors implicated in West-wide extirpations of grizzly bears (Mattson and Merrill 2002), and three papers on the extent and nature of habitat suitable for supporting grizzly bear populations in the northern U.S. Rocky Mountains (Merrill et al. 1999; Merrill and Mattson 2003; Mattson and Merrill 2004). My grizzly bear-related work has been covered by journals such as *Science*, and reported in invited lectures at venues such as the *Smithsonian Institute* and the *American Museum of Natural History*. My attached resume (Exhibit 1) provides additional information. A bibliography of literature cited in this declaration is attached as Exhibit 2 to this declaration.

3. The Yellowstone grizzly bear population has recently experienced catastrophic losses of two key foods—whitebark pine seeds and cutthroat trout. A recent climate-driven mountain pine beetle epidemic killed most mature whitebark pine trees in the ecosystem (Macfarlane et al. 2013)—trees that had produced seeds that were a major source of food for grizzly bears, especially for adult females (Mattson 2000). The maximum losses of whitebark pine occurred between roughly 2003 and 2007 (Macfarlane et al. 2013). Somewhat earlier, during the late 1990s and early 2000s, predation by non-native Lake trout, introduced during the mid-1990s into Yellowstone Lake, functionally eliminated the native cutthroat trout that had

been a major source of energy for most of the bears living near Yellowstone Lake (Mattson and Reinhart 1995; Haroldson et al. 2005; Teisberg et al. 2014). Unlike cutthroat trout, the Lake trout do not spawn in tributary streams, but rather in the depths of Yellowstone Lake, and are therefore not available as a food source for grizzly bears.

4. The most recent estimates of size published for the Yellowstone grizzly bear population by the Interagency Grizzly Bear Study Team (IGBST) in its 2013 Annual Report, using the current preferred Mark-Resight method, show that the population has not increased since the early 2000s (Haroldson et al. 2014; see Figure 1a). This conclusion is consistent with a statement I understand was made by the current IGBST Leader, Frank van Manen, to managers at the 9-10 December, 2014, meeting of the Interagency Grizzly Bear Committee (Chaney 2014). Moreover, if a trend line is fit to a 3-yr running average of IGBST annual population estimates for the period 2007-2013, there is evidence of a population decline (Figure 1b). This 2007-2013 period follows the catastrophic loss of whitebark pine and cutthroat trout as grizzly bear food sources for the Yellowstone population. All referenced figures are set forth in Exhibit 3.

5. Recently published research suggests that Yellowstone's grizzly bears are compensating for recent catastrophic losses of whitebark pine and cutthroat trout by eating more meat (Middleton et al. 2013; Schwartz et al. 2014). Part of this increase involves bears scavenging the remains of hunter-killed elk (Orozco & Miles 2013) as well as depredating on livestock, primarily on the periphery of the ecosystem in areas such as the Upper Green River drainage (DeBolt et al. 2013, 2014). Increased consumption of meat from livestock is indicated by the substantial increase in depredation-related human-grizzly bear conflicts since 2007 (data from IGBST Annual Reports, 2000-2013).

6. Coincident with this transition by grizzly bears to heavier reliance on meat as a food source, the number of known grizzly bear mortalities in the Yellowstone population has sharply increased. The IGBST's published statements and data, most recently in its 2013 Annual Report (Haroldson & Frey 2014), show that cub and yearling survival rates have likely declined in recent years at the same time that ecosystem-wide numbers of known and probable grizzly bear deaths have increased (since 2007) to unprecedented levels, even after considering a decline during 2013 and 2014 (van Manen quoted in Dayton 2014; see Figure 2). Deaths caused by both elk hunters and by individuals responding to livestock conflicts have contributed substantially to this increase, although deaths by other causes have increased as well (see Figure 3). Deaths caused by hunters increased steeply after 2007 and, although fewer during 2012-2013, remain higher than during any other period of record keeping, despite a decline in numbers of sport hunters in grizzly bear range (Clapp et al. 2014; Figure 3b).

7. In summary, invoking weight of evidence, this information leads to the following conclusions: The Yellowstone grizzly bear population has not grown since the early 2000s and may have even declined since 2007. The recent increases in grizzly bear deaths from meat-related conflicts with humans (i.e., conflicts involving livestock and big game either killed or pursued by hunters) are related, in turn, to increased reliance by bears on meat. This turn to meat is plausibly related to recent catastrophic losses of two key foods—whitebark pine seeds and cutthroat trout.

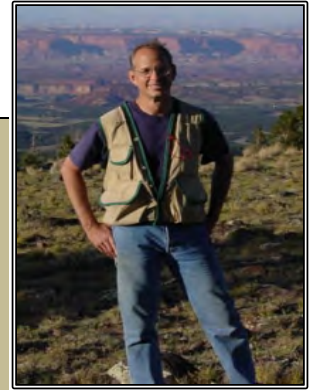
Pursuant to 28 U.S.C. § 1746, I declare under penalty of perjury that the foregoing is true and correct. Executed on December 22, 2014, in Livingston, Montana.



David Mattson

Mattson Declaration
Exhibit 1

David J Mattson, Ph.D.



Short Biography

Dr. David Mattson is currently Lecturer and Visiting Senior Scientist at the Yale School of Forestry and Environmental Studies, Adjunct Faculty at Northern Arizona University, and Research Associate with the Northern Rockies Conservation Cooperative. His former positions, prior to retirement from the U.S. Geological Survey, include Research Wildlife Biologist, Leader of the Colorado Plateau Research Station, and Western Field Director of the MIT-USGS Science Impact Collaborative, all with the USGS. He holds degrees in Forest Resource Management and Forest Ecology and a doctorate in Wildlife Resource Management from the University of Idaho. Dr. Mattson has studied large carnivores for 30 years and has incorporated ecological information from pumas and grizzly bears into demographic, habitat, and risk management models. His ecological research has also included focus on details of carnivore behaviors, including foraging, predation, and relations with humans. His human dimensions research has focused on conservation policy issues dealing with social, political, and organizational dynamics that shape policies and practices of carnivore and other conservation programs. David teaches classes on relations between science and policy. His work has been featured in *Science*, *Ecology*, *Conservation Biology*, *Biological Conservation*, *The Journal of Wildlife Management*, and the *Journal of Mammalogy*, and invited talks at the Smithsonian, American Museum of Natural History, the American Institute of Biological Sciences, and International Conferences on Bear Research and Management.

Areas of research

- Behavioral ecology and demography of large carnivores
- Spatial models of habitat suitability and demography
- Human-large carnivore relations
- Public interest leadership
- Conservation policy and decision-making
- Relations between science and policy

Past and present research projects

- Demography, foraging behavior, and relations with humans and habitat, Yellowstone grizzly bears, 1979-present
- Demography and relations with humans and habitat, Kluane grizzly bears, Yukon Territory, 1992-2006
- Models of habitat suitability for grizzly bears in western North America, 1995-present
- Conservation policy systems for grizzly bears, mountain lions, and wildlife water developments, 1995-present
- Practices to foster coexistence between ranchers and grizzly bears, western Montana, 1998-present
- Demography, foraging behavior, and relations with humans and habitat, mountain lions in Arizona, Utah, and Nevada, 2002-present
- Leadership and stakeholder perspectives in conservation practice, 2004-present

Publications

- Van Riper, C., III, J.R. Hatten, J.T. Giermakowski, D. Mattson, J.A. Holmes, M.J. Johnson, E.M. Nowak, K. Ironside, M. Peters, P. Heinrich, & C.R. Schwalbe (2014). *Projecting climate effects on birds and reptiles of the arid southwestern United States*. U.S. Geological Survey Open-File Report 2014–1050. 100 p. <http://pubs.usgs.gov/of/2014/1050/pdf/ofr2014-1050.pdf/>.
- Clark, S.G., M.B. Rutherford, & D.J. Mattson (2014). Large carnivores, people, and governance. Pages 1-28 in S.G. Clark & M.B. Rutherford (eds). *Large carnivore conservation: Integrating science and policy in the North American West*. University of Chicago Press, Chicago, IL.
- Mattson, D.J., & S.G. Clark (2014). Complexity, rationality and conservation of large carnivores. Pages 325-364 in S.G. Clark & M.B. Rutherford (eds). *Large carnivore conservation: Integrating science and policy in the North American West*. University of Chicago Press, Chicago, IL.
- Mattson, D.J. (2014). State-level management of a common charismatic predator: Mountain lions in the West. Pages 29-64 in S.G. Clark & M.B. Rutherford (eds). *Large carnivore conservation: Integrating science and policy in the North American West*. University of Chicago Press, Chicago, IL.
- Mattson, D.J., & T.A. Arundel (2013). Consumption of seeds of southwestern white pine (*Pinus strobiformis*) by black bear (*Ursus americanus*). *Southwestern Naturalist* 58: 243-245.
- Mattson, D.J., & E.J. Ruther (2012). An explanation of reported puma-related behaviors and behavioral intentions among northern Arizona residents. *Human Dimensions of Wildlife* 17:91–111.
- Mattson, D.J., & S.G. Clark (2012). The discourses of incidents: Cougars on Mt. Elden and in Sabino Canyon, Arizona. *Policy Sciences* 45: 315-343.
- Mattson, D., H. Karl, & S. Clark (2012). Values in natural resources management and policy. Pages 239-260 in H.A. Karl, L. Scarlett, J.C. Vargas-Moreno, & M. Flaxman (eds). *Restoring lands: Coordinating science, politics, and action*. Springer, New York, NY.
- Clark, S.G., M.B. Rutherford, M.R. Auer, D.N. Cherney, R.L. Wallace, D.J. Mattson, D.A. Clark, L. Foote, N. Krogman, P. Wilshusen, & T. Steelman (2011). College and university educational programs as a policy problem (Part 2): Strategies for improvement. *Environmental Management* 47(5): 716-726.
- Clark, S.G., M.B. Rutherford, M.R. Auer, D.N. Cherney, R.L. Wallace, D.J. Mattson, D.A. Clark, L. Foote, N. Krogman, P. Wilshusen, & T. Steelman (2011). College and university educational programs as a policy problem (Part 1): Integrating knowledge, education, and action for a better world? *Environmental Management* 47(5): 701-715.
- Mattson, D.J., S.G. Clark, K.L. Byrd, S.R. Brown, & B. Robinson (2011). Leaders' perspectives in the Yellowstone to Yukon Conservation Initiative. *Policy Sciences* 44: 103-133.
- Mattson, D.J., K. Logan & L. Sweanor. (2011). Factors governing risk of cougar attacks. *Human-Wildlife Interactions* 5: 135-158.
- Mattson, D.J., & S.G. Clark. (2011). Human dignity in concept and practice. *Policy Sciences* 44: 303-319.
- Mattson, D.J., & S.G. Clark. (2010). People, politics, and cougar management. Pages 206-220 in M. Hornocker & S. Negri (eds). *Cougar: Ecology and conservation*. University of Chicago Press, Chicago, IL.
- Peteer-Contesse, T., S.G. Clark, & D. Mattson (2010). A workshop on large scale conservation: An exercise in group problem solving and leadership. Pages 127-150 in S.G. Clark, A. Hohl, C. Picard, & D. Newsome (eds.). *Large scale conservation: Integrating science, management, and policy in the common interest*. Yale University, School of Forestry & Environmental Studies Report 24.
- Jones, A.L., E. Aumack, J. Balsom, P. Beier, J. Belnap, J. Catlin, T.L. Fleischner, E. Grumbine, D.J. Mattson, & C. van Riper III. (2010). The legacy and future visions of conservation biology on the Colorado Plateau. Pages 1-20 in C. van Riper III, B.F. Wakeling, & T.D. Sisk (eds). *The Colorado Plateau IV: Shaping conservation through science and management*. University of Arizona Press, Tucson, AZ.
- Bischoff-Mattson, Z., & D. Mattson. (2009). Effects of simulated mountain lion caching on prey-like carcasses. *Western North American Naturalist* 69: 343-350.
- Hendee, J.C., & D.J. Mattson. (2009). Wildlife in wilderness: a North American and international perspective. Pages 308-333 in C.P. Dawson & J.C. Hendee, eds. *Wilderness management: stewardship and protection of resources and values*. 4th Edition. Fulcrum Publishing, Golden, Colorado.
- Mattson, D.J., & N. Chambers (2009). Human-provided waters for desert wildlife: What is the problem? *Policy Sciences* 42: 113-135.
- Mattson, D. (2008). Finding common ground with cougars, among ourselves, in cougar management. *Wild Felid Monitor* 1(2): 16-17. (INVITED)

- Mattson, D., & H. Karl (2008). Values in Natural Resources Policy and Management: A brief introduction. for MIT-USGS Science Impact Collaborative website. 22 manuscript pp.
- Mattson, D. (2007). The promise of science to serve society. *Northern Rockies Conservation Cooperative News Letter* 20(2): 4. (INVITED)
- Mattson, D., J. Hart, M. Miller & D. Miller (2007). Predation and other behaviors of mountain lions in the Flagstaff Uplands. Pages 31-42 in D. Mattson, editor. *Mountain Lions of the Flagstaff Uplands: 2003-2006 Progress Report*. USGS Open-File Report 2007-1062.
- Mattson, D.J., & T. Merrill (2007). Policy-oriented conservation design. Pages 70-98 in M.F. Price, editor. *Mountain Area Research and Management: Integrated Approaches*. Earthscan Press, London, UK. (INVITED)
- Mattson, D. (2007). Managing for human safety in mountain lion range. Pages 43-56 in D. Mattson, editor. *Mountain Lions of the Flagstaff Uplands: 2003-2006 progress report*. USGS Open-File Report 2007-1062.
- Mattson, D., editor (2007). *Mountain Lions of the Flagstaff Uplands: 2003-2006 Progress Report*. USGS Open-File Report 2007-1062. <http://pubs.usgs.gov/2007/1062>
- Hart, J.V., C. van Riper, III, D.J. Mattson & T.R. Arundel (2007). Effects of fenced transportation corridors on pronghorn movements at Petrified Forest National Park, Arizona. Pages 161-185 in C. van Riper III & M.K. Sogge, editors. *Colorado Plateau III: Integrating Research and Resources Management for Effective Conservation*. University of Arizona Press, Tucson, AZ.
- Hart, J., D. Mattson & T. Arundel (2007). Background and methods for investigating mountain lions in the Flagstaff Uplands. Pages 6-16 in D. Mattson, editor. *Mountain Lions of the Flagstaff Uplands: 2003-2006 Progress Report*. USGS Open-File Report 2007-1062.
- Arundel, T., D. Mattson & J. Hart (2007). Movements and habitat selection by mountain lions in the Flagstaff Uplands. Pages 17-30 in D. Mattson, editor. *Mountain Lions of the Flagstaff Uplands: 2003-2006 Progress Report*. USGS Open-File Report 2007-1062.
- Wilson, S.M., M.J. Madel, D.J. Mattson, J.M. Graham, & T. Merrill (2006). Landscape conditions predisposing grizzly bears to conflicts on private agricultural lands in the western USA. *Biological Conservation* 130: 47-59.
- Mattson, D.J., K.L. Byrd, M.B. Rutherford, S.R. Brown, & T.W. Clark (2006). Finding common ground in large carnivore conservation: Mapping contending perspectives. *Environmental Science and Policy* 9: 392-405.
- Wilson, S.M., M.J. Madel, D.J. Mattson, J.M. Graham, J.A. Burchfield, & J.M. Belsky (2005). Natural landscape features, human-related attractants, and conflict hotspots: A spatial analysis of human-grizzly bear conflicts. *Ursus* 16: 117-129.
- Van Riper, C., III, & D.J. Mattson, editors (2005). *The Colorado Plateau II: Biophysical, Socioeconomic and Cultural Research*. University of Arizona Press, Tucson, AZ.
- Mattson, D.J., S.R. Podrutzny, & M.A. Haroldson (2005). Consumption of pondweed rhizomes by Yellowstone grizzly bears. *Ursus* 16: 41-46.
- Mattson, D.J., S. Herrero & T. Merrill (2005). Are black bears a factor in the restoration of North American grizzly bear populations? *Ursus* 16: 11-30.
- Mattson, D., J. Hart, & T. Arundel (2005). Cougar predation in the Flagstaff Uplands: Preliminary results from July 2003-May 2005. Pages 158-169 in R. Beausoleil & D. Martorello, editors. *Proceedings of the 8th Mountain Lion Workshop*. Washington Department of Fish & Game, Olympia, WA.
- Mattson, D.J. (2005). *Foraging Behavior of North American Bears*. USGS Southwest Biological Science Center, Flagstaff, AZ. 9 pp.
<http://sbsc.wr.usgs.gov/cprs/research/projects/grizzly/pdf/FORAGINGBEHAVIOROFNORTHAMERICANBEARS.pdf>.
- Mattson, D. (2005). Seeing the elephant: Holistic intelligence for solving wildlife-related problems. Pages 53-56 in L. Taylor and P. Murphy, editors. *Proceedings of the Conference on Interdisciplinary Research and Management in Mountain Areas*. The Banff Centre, Banff, AB, Canada. (INVITED)
- Clark, T.W., & D.J. Mattson (2005). Making carnivore management programs more effective: A guide for decision making. Pages 271-276 in T.W. Clark, M.B. Rutherford, and D. Casey, editors. *Coexisting with Large Carnivores*. Island Press, Washington, D.C.
- Mattson, D.J., K. Barber, R. Maw & R. Renkin (2004). Coefficients of Productivity for Yellowstone's Grizzly Bear Habitat. U.S. Geological Survey, Biological Resources Discipline Biological Science

- Report USGS/BRD/BSR-2002-0007.
http://sbsc.wr.usgs.gov/cprs/research/projects/grizzly/grizzly_yellowstone.asp.
- Mattson, D.J., & T. Merrill (2004). A model-based appraisal of habitat conditions for grizzly bears in the Cabinet-Yaak region of Montana and Idaho. *Ursus* 15: 78-91.
- Mattson, D.J. (2004). Consumption of pocket gophers and their food caches by grizzly bears. *Journal of Mammalogy* 85: 731-742.
- Mattson, D.J. (2004). Consumption of voles and vole food caches by Yellowstone grizzly bears: exploratory analyses. *Ursus* 15: 218-226.
- Mattson, D.J. (2004). Living with fierce creatures? An overview and models of mammalian carnivore conservation. Pages 151-176 in N. Fascione, A. Delach & M. Smith, editors. *Predators and People: From Conflict to Conservation*. Island Press, Washington, D.C. (INVITED)
- Merrill, T., & D.J. Mattson (2003). The extent and location of habitat biophysically suitable for grizzly bears in the Yellowstone region. *Ursus* 14: 171-187.
- Mattson, D.J. (2003). Conservation of mountain carnivores: Living with fierce creatures? In K. Martin & D.S. Hik, editors. *Mountain Science Highlights*. <http://www.forestry.ubc.ca/alpine/highlights>. (INVITED)
- Mattson, D.J. (2003). Foot loadings and pad and track widths of Yellowstone grizzly bears. *Western North American Naturalist* 63: 72-79.
- Mattson, D.J., S.R. Podrutzny & M.A. Haroldson (2002). Consumption of fungal sporocarps by Yellowstone grizzly bears. *Ursus* 13: 159-168. (Manuscript chosen as an exemplar for authors submitting manuscripts to *Ursus*)
- Mattson, D.J., M.G. French & S.P. French (2002). Consumption of earthworms by Yellowstone grizzly bears. *Ursus* 13: 153-158. (Abstract chosen as an exemplar for technical writing class, New Mexico State University)
- Mattson, D.J., & T. Merrill (2002). Extirpations of grizzly bears in the contiguous United States, 1850–2000. *Conservation Biology* 16: 1123-1136. (Paper featured in press release by Conservation Biology and solicited for inclusion in eForum on Biocomplexity & Conservation.
- Mattson, D.J. (2002). Consumption of wasps and bees by Yellowstone grizzly bears. *Northwest Science* 76: 166-172.
- Green, G.I., & D.J. Mattson (2002). Tree rubbing by Yellowstone grizzly bears *Ursus arctos*. *Wildlife Biology* 8: 247-254.
- Hendee, J.C., & D.J. Mattson (2002). Wildlife in wilderness: A North American and international perspective. Pages 321-349 in J.C. Hendee & C.P. Dawson, editors. *Wilderness Management: Stewardship and Protection of Resources and Values*. 3rd Edition. Fulcrum Publishing, Golden, CO. (INVITED)
- Reinhart, D.P., M. Haroldson, D.J. Mattson & K.A. Gunther (2001). Effects of exotic species on Yellowstone's grizzly bears. *Western North American Naturalist* 61: 277-288.
- Mattson, D.J., K.C. Kendell & D.P. Reinhart (2001). Whitebark pine, grizzly bears and red squirrels. Pages 121-136 in D.F. Tomback, S.F. Arno, & R.E. Keane, editors. *Whitebark Pine Communities: Ecology and Restoration*. Island Press, Washington, D.C. (INVITED)
- Mattson, D.J. (2001). The effects of fragmentation, edges and habitat loss on wildlife: A perspective for mountain wildlife. Pages 191-200 in L. Taylor & A. Ryall, editors. *Human Use Management in Mountain Areas*. The Banff Centre, Banff, AB. (INVITED).
- Mattson, D.J. (2001). Myrmecophagy by Yellowstone grizzly bears. *Canadian Journal of Zoology* 79: 779-793.
- Clark, T.W., D.J. Mattson, R.P. Reading & B. Miller (2001). Interdisciplinary problem solving in carnivore conservation: An introduction. Pages 223-240 in J.L. Gittleman, S.M. Funk, D. Macdonald, & R.K. Wayne, editors. *Carnivore Conservation*. Cambridge University Press, Cambridge, U.K. (INVITED)
- Mattson, D.J. (2000). Grizzly bears. Pages 66-71 in R.P. Reading & B. Miller, editors. *Endangered Animals: A Reference Guide to Conflicting Issues*. Greenwood Press, Westport, CT. (INVITED)
- Mattson, D.J. (2000). *Causes and Consequences of Dietary Differences Among Yellowstone Grizzly Bears* (*Ursus arctos*). Ph.D. Dissertation, University of Idaho, Moscow, ID. 173 pp.
- Podrutzny, S.R., D.P. Reinhart & D.J. Mattson (1999). Fire, red squirrels, whitebark pine, and Yellowstone grizzly bears. *Ursus* 11: 131-138.
- Mattson, D.J., G.I. Green & R.A. Swalley (1999). Geophagy by Yellowstone grizzly bears. *Ursus* 11: 109-116.

- Scott, J.M., E.A. Norse, H. Arita, A. Dobson, J.A. Estes, M. Foster, B. Gilbert, D.B. Jenson, R.L. Knight, D. Mattson & M.E. Soulé (1999). The issues of scale in selecting and designing biological reserves. Pages 19-37 in M.E. Soulé & J. Terborgh, editors. *Continental Conservation*. Island Press, Washington, D.C. (INVITED)
- Pease, C.M., & D.J. Mattson (1999). Demography of the Yellowstone grizzly bears. *Ecology* 80: 957-975. (Paper featured in press release by Ecology and in an article by Science)
- Merrill, T., D.J. Mattson, R.G. Wright & H.B. Quigley (1999). Defining landscapes suitable for restoration of grizzly bears *Ursus arctos* in Idaho. *Biological Conservation* 87: 231-248.
- Dobson, A., K. Ralls, M. Foster, M.E. Soulé, D. Simberloff, D. Doak, J.A. Estes, L.S. Mills, D. Mattson, R. Dirzo, H. Arita, S. Ryan, E.A. Norse, R.F. Noss & D. Johns (1999). Corridors: Reconnecting fragmented landscapes. Pages 129-170 in M.E. Soulé & J. Terborgh, editors. *Continental Conservation*. Island Press, Washington, D.C. (INVITED)
- Merrill, T., & D.J. Mattson (1998). Defining grizzly bear habitat in the Yellowstone to Yukon. Pages 103-111 in A. Harvey, editor. *A Sense of Place: Issues, Attitudes and Resources in the Yellowstone to Yukon Ecoregion*. Yellowstone to Yukon Conservation Initiative, Canmore, AB. (INVITED)
- Merrill, T., & D.J. Mattson (1998). Land cover structure of Yellowstone to Yukon. Pages 27-29 in A. Harvey, editor. *A Sense of Place: Issues, Attitudes and Resources in the Yellowstone to Yukon Ecoregion*. Yellowstone to Yukon Conservation Initiative, Canmore, AB. (INVITED)
- Mattson, D.J. (1998). Changes in the mortality of Yellowstone's grizzly bears. *Ursus* 10: 129-138.
- Mattson, D.J. (1998). Diet and morphology of extant and recently extinct northern bears. *Ursus* 10: 479-496.
- Mattson, D.J., & D.P. Reinhart (1997). Excavation of red squirrel middens by Yellowstone grizzly bears. *Journal of Applied Ecology* 34: 926-940.
- Mattson, D.J. (1997). Wilderness-dependent wildlife: The large and the carnivorous. *International Journal of Wilderness* 3: 34-38. (INVITED)
- Mattson, D.J. (1997). Sustainable grizzly bear mortality calculated from counts of females with cubs-of-the-year: An evaluation. *Biological Conservation* 81: 103-111.
- Mattson, D.J. (1997). Use of lodgepole pine cover types by Yellowstone grizzly bears. *Journal of Wildlife Management* 61: 480-496.
- Mattson, D.J. (1997). Use of ungulates by Yellowstone grizzly bears *Ursus arctos*. *Biological Conservation* 81: 161-177.
- Green, G.I., D.J. Mattson & J.M. Peek (1997). Spring feeding on ungulate carcasses by grizzly bears in Yellowstone National Park. *Journal of Wildlife Management* 61: 1040-1055.
- Mattson, D.J. (1997). Selection of microsites by grizzly bears to excavate biscuitroots. *Journal of Mammalogy* 78: 228-238.
- Wright, R. G. & D.J. Mattson (1996). The origin and purpose of national parks and protected areas. Pages 3-14 in R.G. Wright, editor. *National Parks and Protected Areas: Their Role in Environmental Protection*. Blackwell Science, Cambridge, MA. (INVITED)
- Mills, L.S., S.G. Hayes, C. Baldwin, M.J. Wisdom, J. Citta, D.J. Mattson & K. Murphy (1996). Factors leading to different viability predictions for a grizzly bear data set. *Conservation Biology* 10: 863-873.
- Mattson, D. J., S. Herrero, R.G. Wright & C.M. Pease (1996). Designing and managing protected areas for grizzly bears: How much is enough? Pages 133-164 in R.G. Wright, editor. *National Parks and Protected Areas: Their Role in Environmental Protection*. Blackwell Science, Cambridge, MA. (INVITED)
- Mattson, D.J., S. Herrero, R.G. Wright & C.M. Pease (1996). Science and management of Rocky Mountain grizzly bears. *Conservation Biology* 10: 1013-1025. (INVITED)
- Mattson, D.J., & D.P. Reinhart (1996). Indicators of red squirrel (*Tamiasciurus hudsonicus*) abundance in the whitebark pine zone. *Great Basin Naturalist* 56: 272-275.
- Mattson, D.J. (1996). Ethics and science in natural resource agencies. *BioScience* 46: 767-771. (INVITED)
- Mattson, D.J. (1996). Modeling grizzly bear habitat suitability in Idaho. *GAP Analysis Program Bulletin* 5: 18-19. (in Best of Gap at <http://www.gap.uidaho.edu/Literature/BestofGap/BestContents.thm>) (INVITED)
- Mattson, D.J., R.G. Wright, K.C. Kendall & C.J. Martinka (1995). Grizzly bears. Pages 103-105 in E.T. LaRoe, G.S. Farris, C.E. Puckett, P.D. Doran & M.J. Mac, editors. *Our Living Resources: A Report to*

- the Nation on the Distribution, Abundance, and Health of U.S. Plants, Animals, and Ecosystems*. U.S. National Biological Service, Washington, D.C.
- Mattson, D.J., & D.P. Reinhart (1995). Influences of cutthroat trout (*Oncorhynchus clarki*) on behaviour and reproduction of Yellowstone grizzly bears (*Ursus arctos*), 1975-1989. *Canadian Journal of Zoology* 73: 2072-2079.
- Mattson, D.J. (1995). The New World Mine and grizzly bears: A window on ecosystem management. *Journal of Energy, Natural Resources & Environmental Law* 15: 267-293. (INVITED)
- Mattson, D.J. (1995). Book review — "Greater Yellowstone's future: Prospects for ecosystem science, management, and policy." *Endangered Species Update* 12: 10.
- Mattson, D.J., D.P. Reinhart & B.M. Blanchard (1994). Variation in production and bear use of whitebark pine seeds in the Yellowstone area. Pages 205-220 in D.G. Despain, editor. *Plants and Their Environments: Proceedings of the First Biennial Scientific Conference on the Greater Yellowstone Ecosystem*. U.S. National Park Service Technical Report NPS/NRYELL/NRTR.
- Mattson, D.J., & D.P. Reinhart (1994). Bear use of whitebark pine seeds in North America. Pages 212-220 in W.C. Schmidt & F.-K. Holtmeier, compilers. *Proceedings — International Workshop on Subalpine Stone Pines and Their Environment: The Status of Our Knowledge*. U.S. Forest Service General Technical Report INT-GTR-309. (INVITED)
- Mattson, D.J., & J.J. Craighead (1994). The Yellowstone grizzly bear recovery program: Uncertain information, uncertainty policy. Pages 101-129 in T.W. Clark, R.P. Reading & A. Clarke, editors. *Endangered Species Recovery: Finding the Lessons, Improving the Process*. Island Press, Washington, D.C. (INVITED)
- Mattson, D.J., & I. Revenko (1993). Kamchatkan brown bears and *Pinus pumila*. Pages 48-49 in W. McCaughey & K.J. McDonald, compilers. *Management of Whitebark Pine Ecosystems — An International and Regional Perspective*. U.S. Forest Service Intermountain Research Station, Ogden, UT.
- Mattson, D.J., R.R. Knight & B.M. Blanchard (1992). Cannibalism and predation on black bears by grizzly bears in the Yellowstone ecosystem, 1975-1990. *Journal of Mammalogy* 73: 22-425.
- Mattson, D.J., B.M. Blanchard & R.R. Knight (1992). Yellowstone grizzly bear mortality, human habituation, and whitebark pine seed crops. *Journal of Wildlife Management* 56: 432-442.
- Mattson, D.J., & R.R. Knight (1992). Spring bear use of ungulates in the Firehole River drainage of Yellowstone National Park. Pages 5.93-5.120 in J.D. Varley & W.G. Brewster, editors. *Wolves for Yellowstone? A Report to the United States Congress, Volume IV, Research and Analysis*. U.S. National Park Service, Yellowstone National Park, WY.
- Mattson, D.J. (1992). The Yellowstone experience: "Between a rock and a hard place." Pages 23-30 in R.K. McCann, editor. *Grizzly Bear Management Workshop Proceedings*. Environment Canada, Parks Service, Revelstoke, BC. (INVITED)
- Blanchard, B.M., R.R. Knight & D.J. Mattson (1992). Distribution of Yellowstone grizzly bears during the 1980s. *American Midland Naturalist* 128: 332-338.
- Mattson, D.J., C.M. Gillin, S.A. Benson & R.R. Knight (1991). Bear feeding activity at alpine insect aggregation sites in the Yellowstone ecosystem. *Canadian Journal of Zoology* 69: 430-2435.
- Mattson, D.J., B.M. Blanchard & R.R. Knight (1991). Food habits of Yellowstone grizzly bears, 1977-1987. *Canadian Journal of Zoology* 69: 1619-1629.
- Mattson, D.J., & M.W. Reid (1991). Conservation of the Yellowstone grizzly bear. *Conservation Biology* 5: 364-372.
- Mattson, D.J., & R.R. Knight (1991). *Application of Cumulative Effects Analysis to the Yellowstone Grizzly Bear Population*. U.S. National Park Service, Interagency Grizzly Bear Study Team Report 1991C, Bozeman, MT. 8pp.
- Reinhart, D.P., & D.J. Mattson (1990). Bear use of cutthroat trout spawning streams in Yellowstone National Park. *International Conference on Bear Research & Management* 8: 343-350.
- Reinhart, D.P., & D.J. Mattson (1990). Red squirrels in the whitebark pine zone. Pages 256-263 in W.C. Schmidt & K.J. McDonald, compilers. *Proceedings — Symposium on Whitebark Pine Ecosystems: Ecology and Management of a High-Mountain Resource*. U.S. Forest Service General Technical Report INT-270.
- Mattson, D.J., & D.P. Reinhart (1990). Whitebark pine on the Mount Washburn massif, Yellowstone National Park. Pages 106-117 in W.C. Schmidt & K.J. McDonald, compilers. *Proceedings —*

- Symposium on Whitebark Pine Ecosystems: Ecology and Management of a High-Mountain Resource*. U.S. Forest Service General Technical Report INT-270.
- Mattson, D.J., & C. Jonkel (1990). Stone pines and bears. Pages 223-236 in W.C. Schmidt & K.J. McDonald, compilers. *Proceedings — Symposium on Whitebark Pine Ecosystems: Ecology and Management of a High-Mountain Resource*. U.S. Forest Service General Technical Report INT-270. (INVITED)
- Mattson, D.J. (1990). Human impacts on bear habitat use. *International Conference on Bear Research & Management* 8: 35-56. (INVITED)
- Mattson, D.J., & R.R. Knight (1989). Evaluation of grizzly bear habitat using habitat and cover type classifications. Pages 135-143 in D.E. Ferguson, P. Morgan & F.D. Johnson, compilers. *Proceedings — Land Classifications Based on Vegetation: Applications for Resource Management*. U.S. Forest Service General Technical Report INT-257. (INVITED)
- Mattson, D., G. Green & J. Henry (1988). Dynamics of ungulate carcasses and their use by bears on ungulate winter ranges. Page 18 in F. Singer, compiler. *First Annual Meeting of Research and Monitoring on Yellowstone's Northern Range*. U.S. National Park Service, Yellowstone National Park, WY.
- Mattson, D.J., R.R. Knight & B.M. Blanchard (1987). The effects of developments and primary roads on grizzly bear habitat use in Yellowstone National Park, Wyoming. *International Conference on Bear Research & Management* 7: 259-273.
- Weaver, J., R. Escano, D. Mattson & T. Puchlerz (1986). Cumulative effects process for the Yellowstone ecosystem. Pages 234-246 in G. Contreras & K. Evans, compilers. *Proceedings — Grizzly Bear Habitat Symposium*. U.S. Forest Service General Technical Report INT-207.
- Picton, H., D. Mattson, B. Blanchard & R. Knight (1986). Climate, carrying capacity, and the Yellowstone grizzly bear. Pages 129-135 in G. Contreras & K. Evans, compilers. *Proceedings — Grizzly Bear Habitat Symposium*. U.S. Forest Service General Technical Report INT-207.
- Mattson, D.J., R.R. Knight & B.M. Blanchard (1986). Derivation of habitat component values for the Yellowstone grizzly bear. Pages 222-229 in G. Contreras & K. Evans, compilers. *Proceedings — Grizzly Bear Habitat Symposium*. U.S. Forest Service General Technical Report INT-207.
- Mattson, D.J., & D.G. Despain (1985). *Grizzly Bear Habitat Component Mapping Handbook for the Yellowstone Ecosystem*. U.S. National Park Service, U.S. Forest Service, Mammoth, WY. 37pp.
- Brunsfeld, S.J., F.D. Johnson, J. Janish & D. Mattson (1985). *Field guide to the willows of east-central Idaho*. University of Idaho, Forest, Wildlife & Range Experiment Station, Bulletin No. 39.
- Mattson, D.J. (1984). *Classification and Environmental Relationships of Wetland Vegetation in Central Yellowstone National Park*. M.S. Thesis, University of Idaho, Moscow. 409pp.
- Brunsfeld, S.J., L. Ashland, C.R. Hatch, D.J. Mattson, A.L. Merkel, M. Sargent & G.H. Savage (1982). *Biomass resources in 66 African, Asian, and Latin American countries*. University of Idaho Forestry, Wildlife & Range Experiment Station, Contribution 231.

Mattson Declaration
Exhibit 2

LITERATURE CITED

- Chaney, R. (2014). Grizzly numbers may determine path to possible delisting. *Missoulian*, 11 December 2014.
- Clapp, J., K. Frey, & D. Meintz (2014). Trend in elk hunter numbers within the Grizzly Bear Recovery Zone plus the 10-mile perimeter area. Page 49 in F.T. van Manen, M.A. Haroldson, K. West, & S.C. Soileau, editors. *Yellowstone grizzly bear investigations: Annual report of the Interagency Grizzly Bear Study Team, 2013*. U.S. Geological Survey, Bozeman, Montana, USA.
- Dayton, K. (2014). Reports say Yellowstone grizzly population is strong. *WyoFile*, 30 October 2014.
- DeBolt, B., Z. Turnbull, M. Boyce, K. Bales, Z. Gregory, & J. Wilmot (2014). Grizzly bear-human conflicts in Wyoming. Pages 60-64 in F.T. van Manen, M.A. Haroldson, K. West, & S.C. Soileau, editors. *Yellowstone grizzly bear investigations: Annual report of the Interagency Grizzly Bear Study Team, 2013*. U.S. Geological Survey, Bozeman, Montana, USA.
- DeBoldt, B., Z. Turnbull, M. Boyce, K. Bales, & Z. Gregory (2013). Grizzly bear-human conflicts in Wyoming. Pages 60-61 in F.T. van Manen, M.A. Haroldson, & K. West, editors. *Yellowstone grizzly bear investigations: Annual report of the Interagency Grizzly Bear Study Team, 2012*. U.S. Geological Survey, Bozeman, Montana, USA.
- Haroldson & Frey (2014). Estimated sustainability of annual grizzly bear mortalities. Page 27-31 in F.T. van Manen, M.A. Haroldson, K. West, & S.C. Soileau, editors. *Yellowstone grizzly bear investigations: Annual report of the Interagency Grizzly Bear Study Team, 2013*. U.S. Geological Survey, Bozeman, Montana, USA.
- Haroldson, M.A., F.T. van Manen, & D.D. Bjornlie (2013). Estimating number of females with cubs-of-the-year. Pages 11-18 in F.T. van Manen, M.A. Haroldson, & K. West, editors. *Yellowstone grizzly bear investigations: Annual report of the Interagency Grizzly Bear Study Team, 2012*. U.S. Geological Survey, Bozeman, Montana, USA.
- Haroldson, M.A., F.T. van Manen, & D.D. Bjornlie (2014). Estimating number of females with cubs-of-the-year. Pages 12-21 in F.T. van Manen, M.A. Haroldson, K. West, & S.C. Soileau, editors. *Yellowstone grizzly bear investigations: Annual report of the Interagency Grizzly Bear Study Team, 2013*. U.S. Geological Survey, Bozeman, Montana, USA.
- Haroldson, M.A., K.A. Gunther, D.P. Reinhart, S.R. Podruzny, C. Cegelski, L. Waits, T. Wyman, & J. Smith (2005). Changing numbers of spawning cutthroat trout in tributary streams of Yellowstone Lake and estimates of grizzly bears visiting streams from DNA. *Ursus* 16: 167-180.
- Macfarlane, W.W., J.A. Logan, & W.R. Kern (2013). An innovative aerial assessment of Greater Yellowstone Ecosystem mountain pine beetle-caused whitebark pine mortality. *Ecological Applications* 23: 421-437.
- Mattson, D.J. (1997). Sustainable grizzly bear mortality calculated from counts of females with cubs-of-the-year: An evaluation. *Biological Conservation* 81: 103-111.

- Mattson, D.J. (1998). Changes in the mortality of Yellowstone's grizzly bears. *Ursus* 10: 129-138.
- Mattson, D.J. (2000). *Causes and Consequences of Dietary Differences Among Yellowstone Grizzly Bears* (*Ursus arctos*). Ph.D. Dissertation, University of Idaho, Moscow, ID. 173 pp.
- Mattson, D.J., & T. Merrill (2002). Extirpations of grizzly bears in the contiguous United States, 1850–2000. *Conservation Biology* 16: 1123-1136.
- Mattson, D.J., & T. Merrill (2004). A model-based appraisal of habitat conditions for grizzly bears in the Cabinet-Yaak region of Montana and Idaho. *Ursus* 15: 78-91.
- Mattson, D.J., & D.P. Reinhart (1995). Influences of cutthroat trout (*Oncorhynchus clarki*) on behaviour and reproduction of Yellowstone grizzly bears (*Ursus arctos*), 1975-1989. *Canadian Journal of Zoology* 73: 2072-2079.
- Merrill, T., & D.J. Mattson (2003). The extent and location of habitat biophysically suitable for grizzly bears in the Yellowstone region. *Ursus* 14: 171-187.
- Merrill, T., D.J. Mattson, R.G. Wright & H.B. Quigley (1999). Defining landscapes suitable for restoration of grizzly bears *Ursus arctos* in Idaho. *Biological Conservation* 87: 231-248.
- Middleton A.D., T.A. Morrison, J.K. Fortin, C.T. Robbins, K.M. Proffitt, P.J. White, D.E. McWhirter, T.M. Koel, D.G. Brimeyer, W.S. Fairbanks, & M.J. Kauffman (2013). Grizzly bear predation links the loss of native trout to the demography of migratory elk in Yellowstone. *Proceedings of the Royal Society B* 280: 20130870.
- Orozco, K. & N. Miles (2013) Use of diminished whitebark pine resources by adult female grizzly bears in Togwotee Pass, Spread Creek, and Mount Leidy in the Bridger-Teton National Forest, Wyoming, 2012. Pages 45-47 in F.T. van Manen, M.A. Haroldson, & K. West, editors. *Yellowstone grizzly bear investigations: Annual report of the Interagency Grizzly Bear Study Team, 2012*. U.S. Geological Survey, Bozeman, Montana, USA.
- Pease, C.M., & D.J. Mattson (1999). Demography of the Yellowstone grizzly bears. *Ecology* 80: 957-975.
- Schwartz, C.C., J.K. Fortin, J.E. Teisberg, M.A. Haroldson, C. Servheen, C.T. Robbins, & F.T. van Manen (2014). Body and diet composition of sympatric black and grizzly bears in the Greater Yellowstone Ecosystem. *Journal of Wildlife Management* 78: 68-78.
- Teisberg, J.E., M.A. Haroldson, C.C. Schwartz, K.A. Gunther, J.K. Fortin, & C.T. Robbins (2014). Contrasting past and current numbers of bear visiting Yellowstone cutthroat trout streams. *Journal of Wildlife Management* 78: 369-378.

Mattson Declaration
Exhibit 3

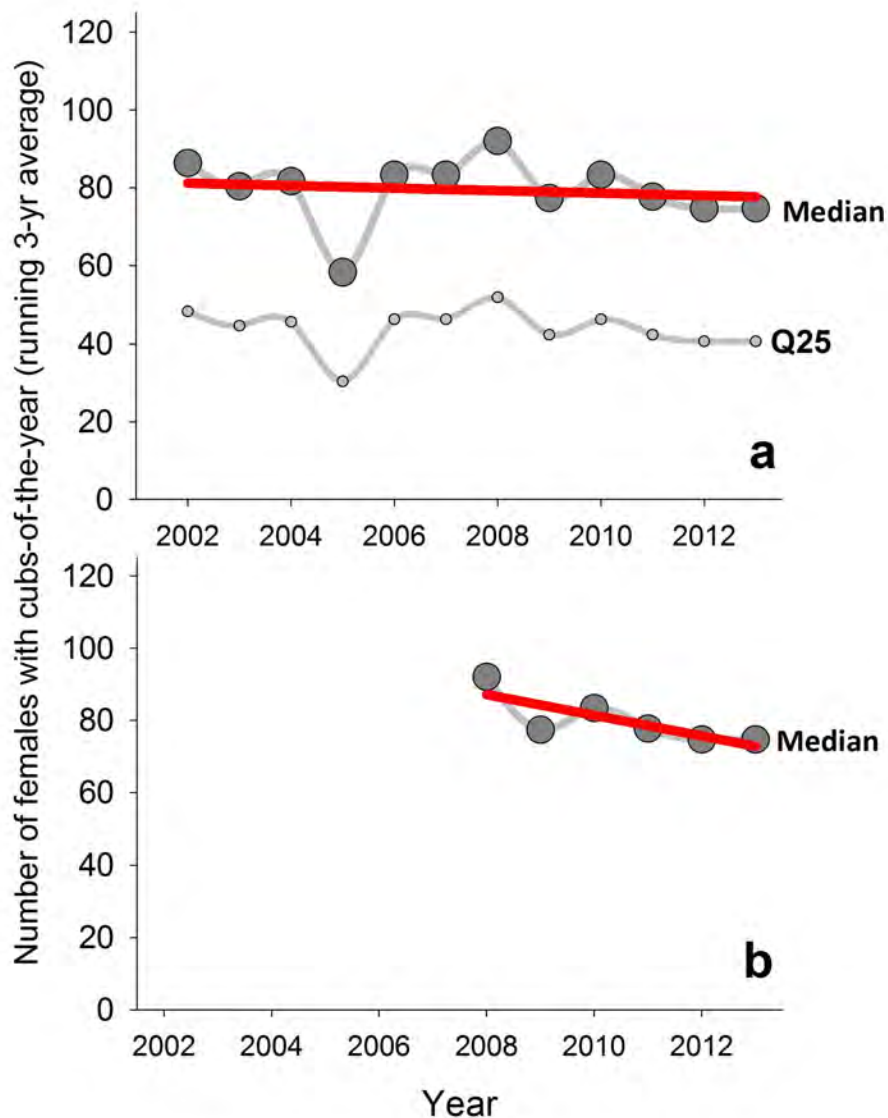


Figure 1. Three-year running average of total number of females with cubs-of-the-year (COY) estimated by the current preferred Mark-resight method. Estimates of total population size are essentially a simple multiplication of this number to account for other sex-age classes. The top figure (a) shows the median estimate of numbers of females with COY in the Yellowstone grizzly bear population as dark gray dots and the lower quartile bound of this estimate (Q25) as smaller lighter gray dots. A linear trend line (in red) has been fit to the median estimates showing no increase in population size. The bottom figure (b) repeats the information for median estimates, but only for the years 2007-2013. Invoking weight of evidence, the fitted trend line is more consistent with a declining rather than stable population.

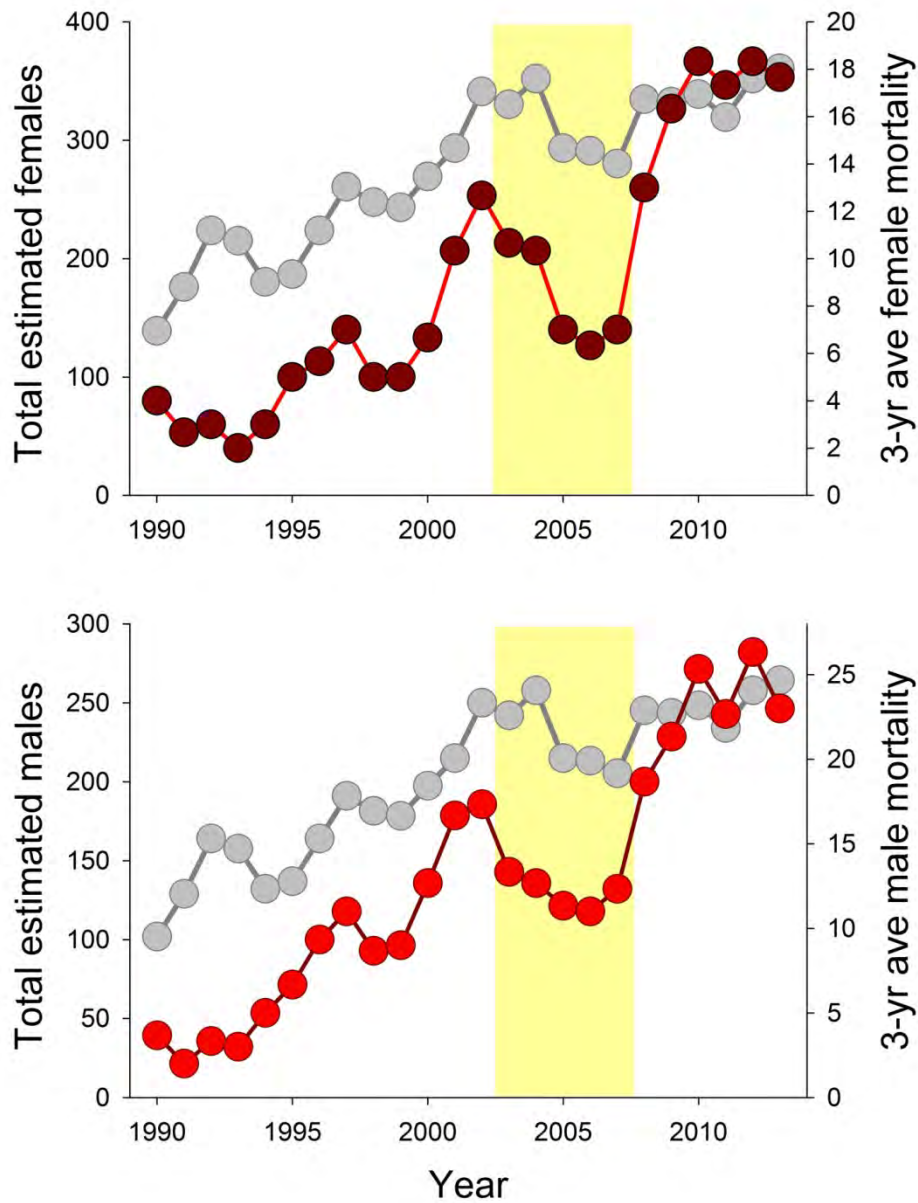


Figure 2. Three-year running averages of total female (top) and male (bottom) deaths, both in shades of red, superimposed on total numbers of male and female bears estimated for the population, shown in gray. Mortalities are from all causes, and with cubs and yearlings for which sex is unknown allocated to the respective sexes based on an assumed 1:1 sex ratio. Total numbers of bears are derived from Chao2-based estimates of population size, and using pre-2012 estimates of population structure. The yellow-shaded area denotes the time period during which maximum losses of whitebark pine occurred. The obvious points to be made here are that mortalities of both sexes increased substantially during recent years at the same time that there was no estimated increase in population size, and immediately after the period when most whitebark pine was lost. These conclusions are robust to any nuances in method.

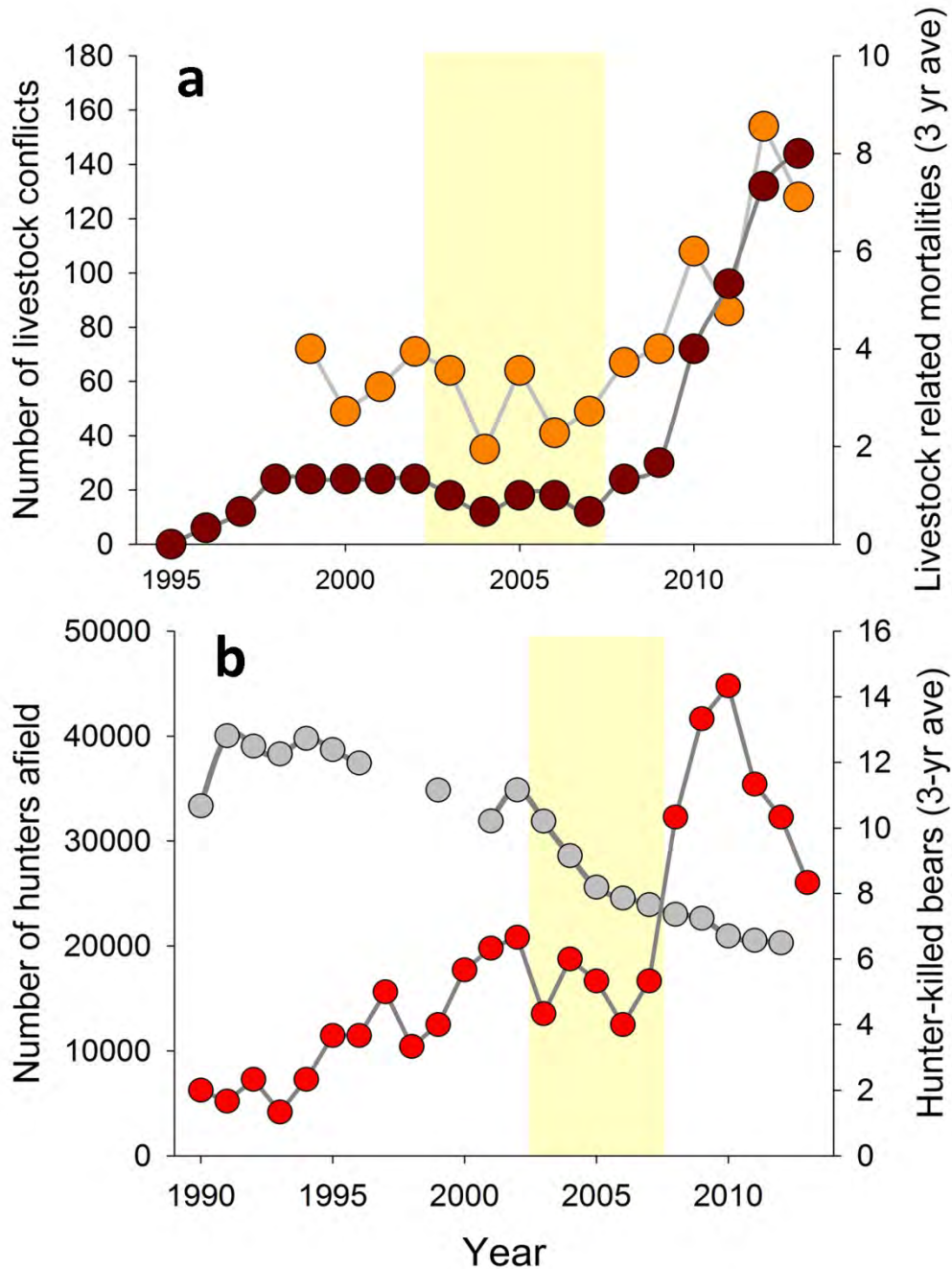


Figure 3. (a) Total numbers of livestock-related conflicts, shown by orange dots, and known and probable grizzly bear deaths related to livestock conflicts, shown by dark red dots. Mortality figures represent a 3-year running average. (b) Total numbers of grizzly bears known to have been killed, or probably killed, by hunters in association with their hunting activities, shown by the red dots. These activities included camping and traveling while on a hunt. The gray dots denote numbers of sport hunters within or near occupied grizzly bear habitat. As in figure 2, the yellow shaded areas denote the period when most whitebark pine was lost in the ecosystem. The obvious point to be made here is that conflicts and mortalities related to human-associated meat increased dramatically immediately after the period with most whitebark pine was lost.