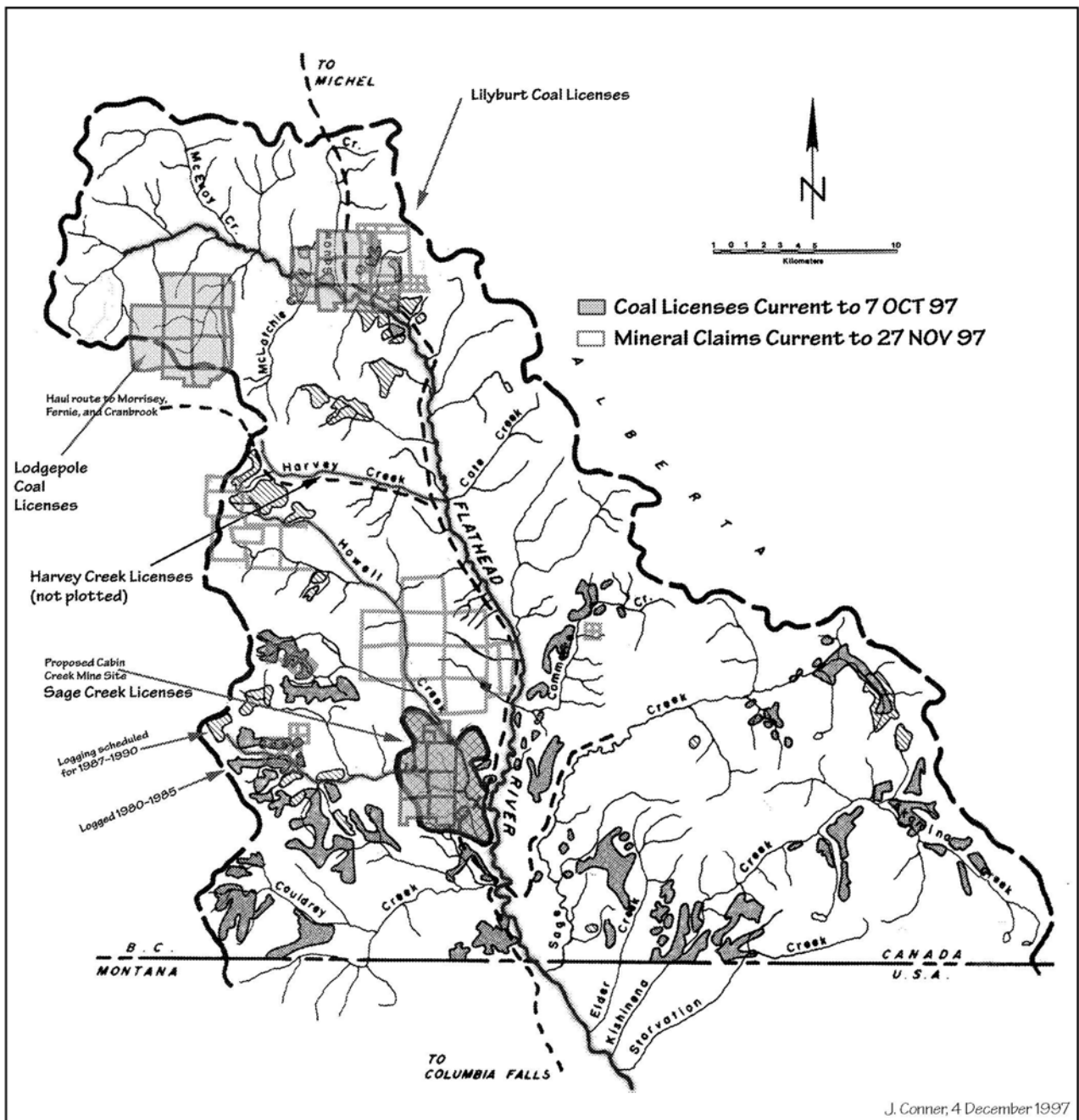


Figure 1. The transboundary Flathead, Crowsnest coalfields with proposed coal and coalbed methane projects, and Waterton-Glacier International Peace Park. Base map courtesy of Miistakis Institute for the Rockies, 2002.



J. Conner, 4 December 1997

Figure 2. Coal Licenses in Southeastern British Columbia, showing the Lodgepole license in the upper left, and the Sage Creek license (proposed until 1988) in the lower center of the map. Map courtesy of Flathead Wild: www.flatheadwild.ca

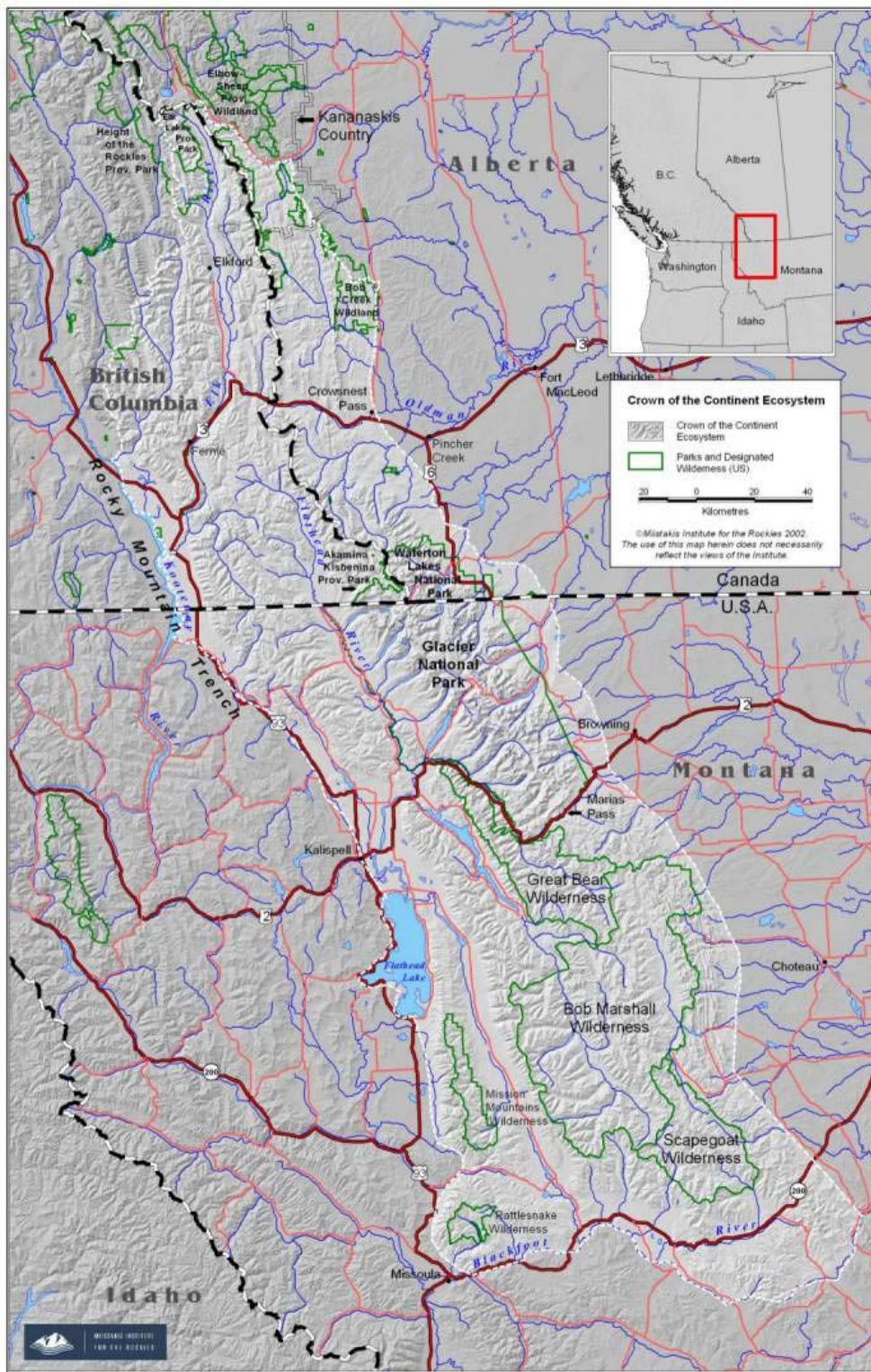


Figure 3. Crown of the Continent Ecoregion, with Waterton-Glacier International Peace Park at its center. Courtesy of the Miistakis Institute.

Available at: <http://flatheadbasincommission.org/maps.html>

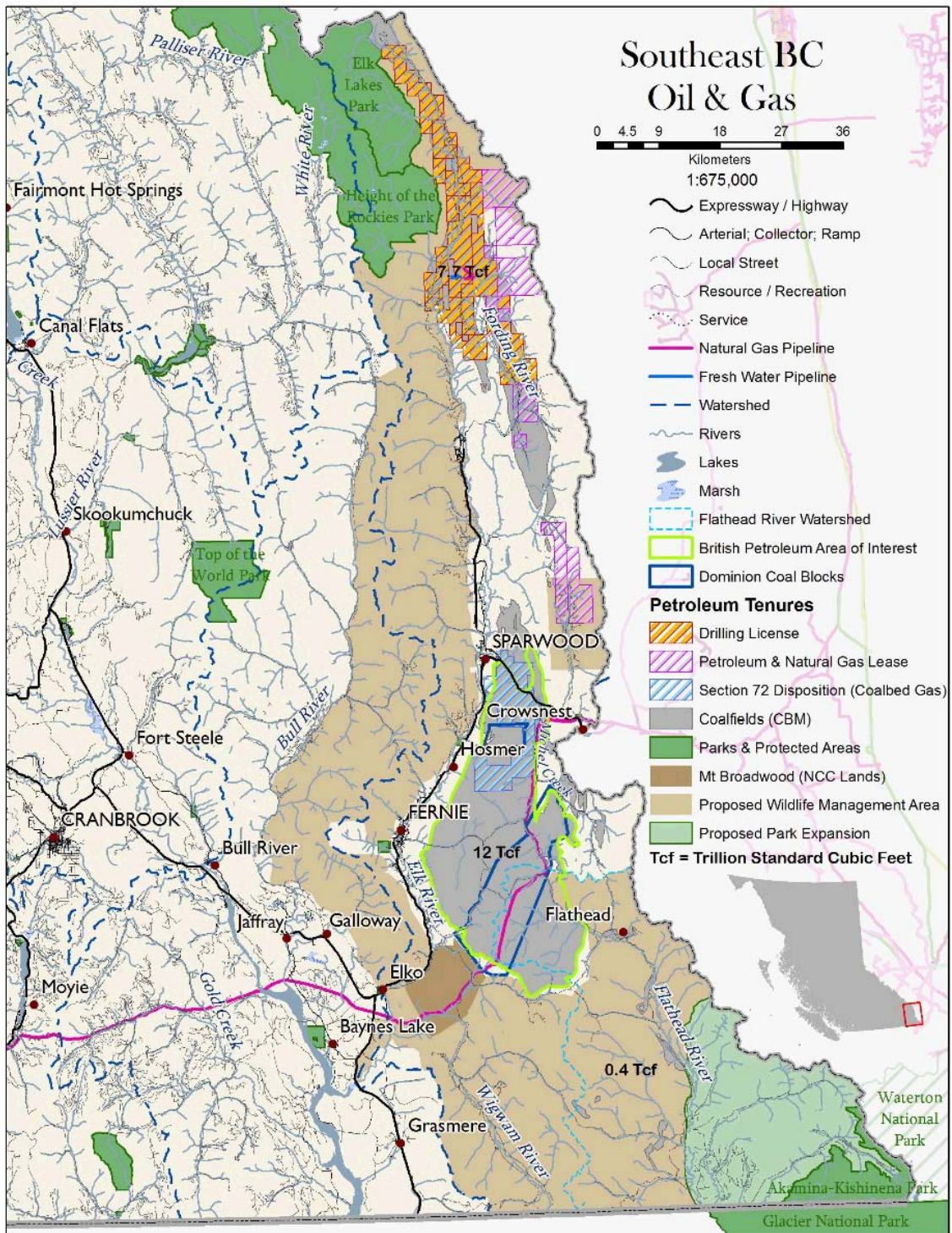


Figure 4. Southeast BC oil and gas proposals, relative to the Flathead River watershed, proposed park expansion, and Waterton-Glacier International Peace Park. Map courtesy of Canadian Parks and Wilderness Society.

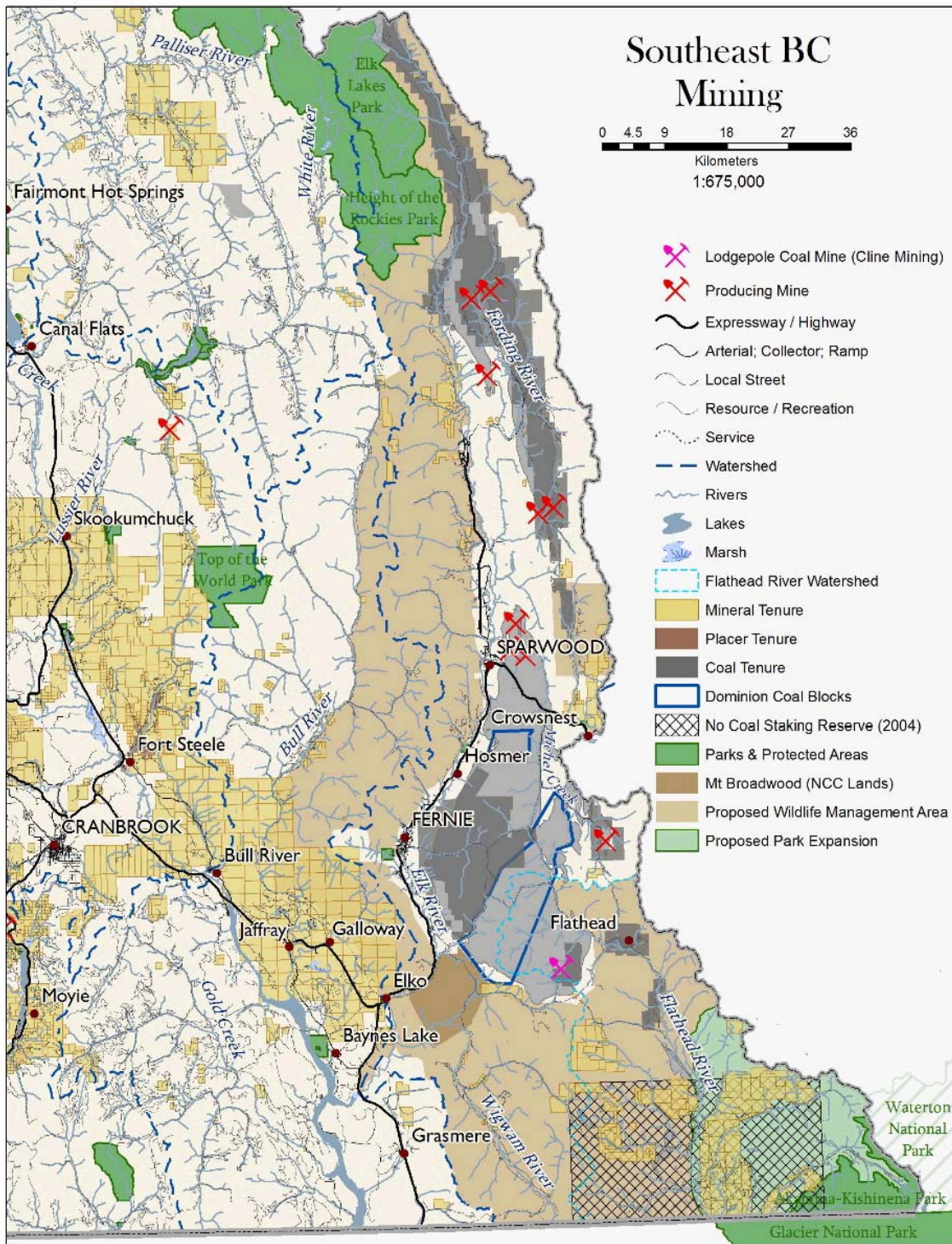


Figure 5. Southeast BC Mining proposals, relative to Waterton-Glacier International Peace Park. Map courtesy of Canadian Parks and Wilderness Society.

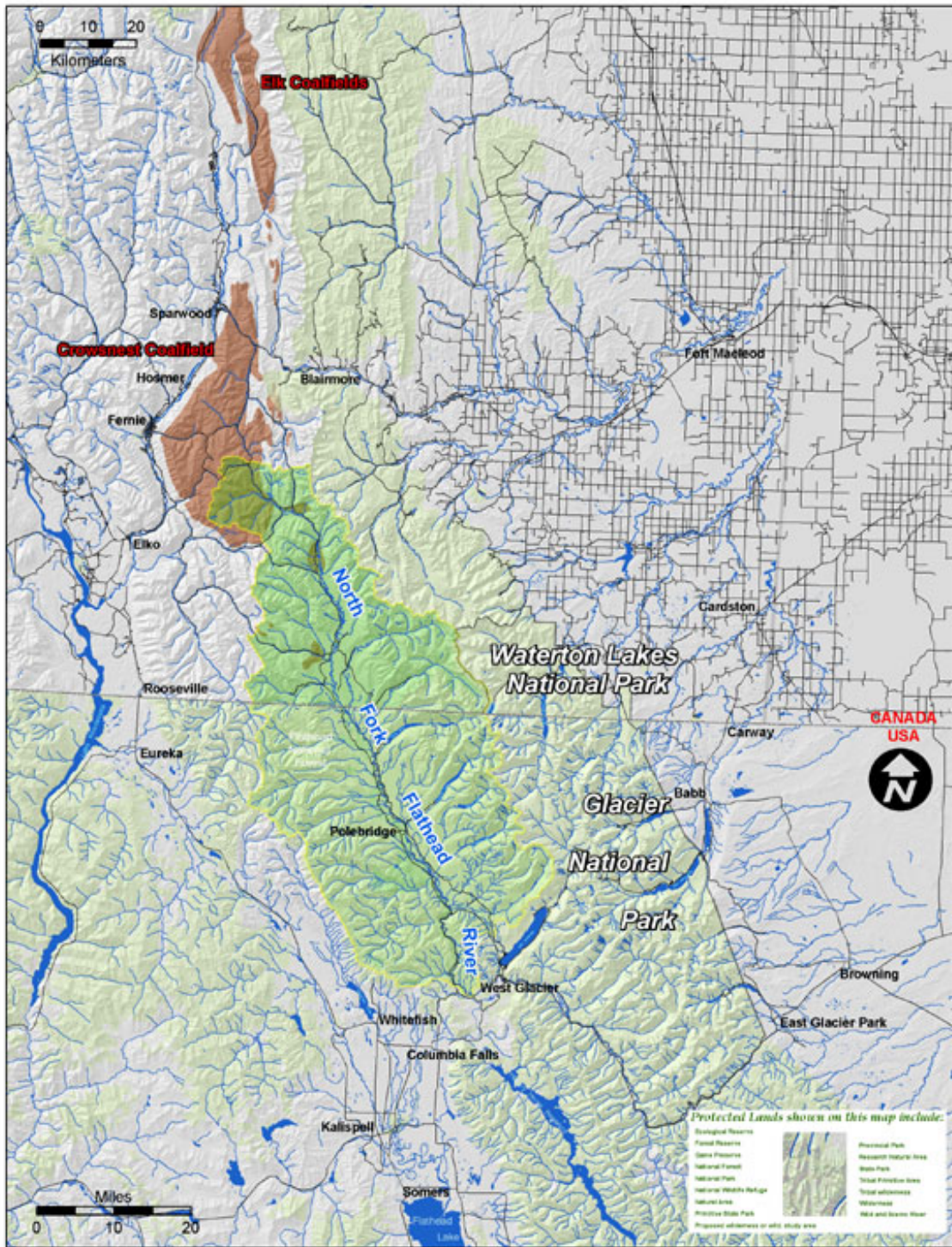


Figure 6. Locations of the Elk Valley and Crowsnest Coalfields, relative to the Flathead River watershed and Waterton-Glacier International Peace Park. Available at: http://flatheadbasincommission.org/transboundary/maps/MenickeCoalfieldbasemap_med.jpg.

Fig. 7

RELATIVE ABUNDANCE OF GRIZZLY BEARS IN THE NORTH FORK OF THE FLATHEAD AND VICINITY

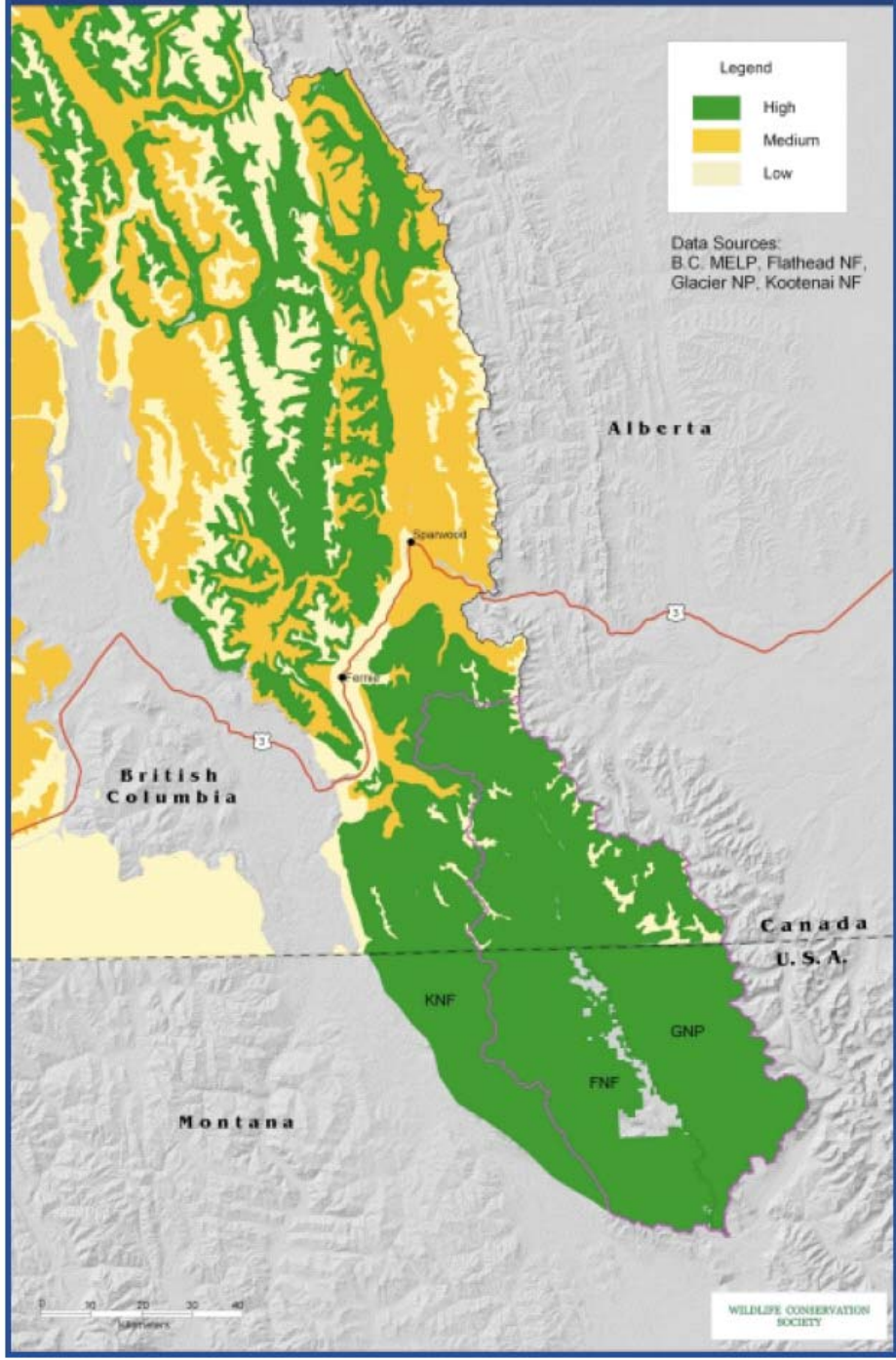


Figure 7. Relative Abundance of Grizzly Bears in the North Fork of the Flathead River watershed. From: Wildlife Conservation Society Working Paper No.18, *The Transboundary Flathead: A Critical Landscape for Carnivores in the Rocky Mountains* (2001).

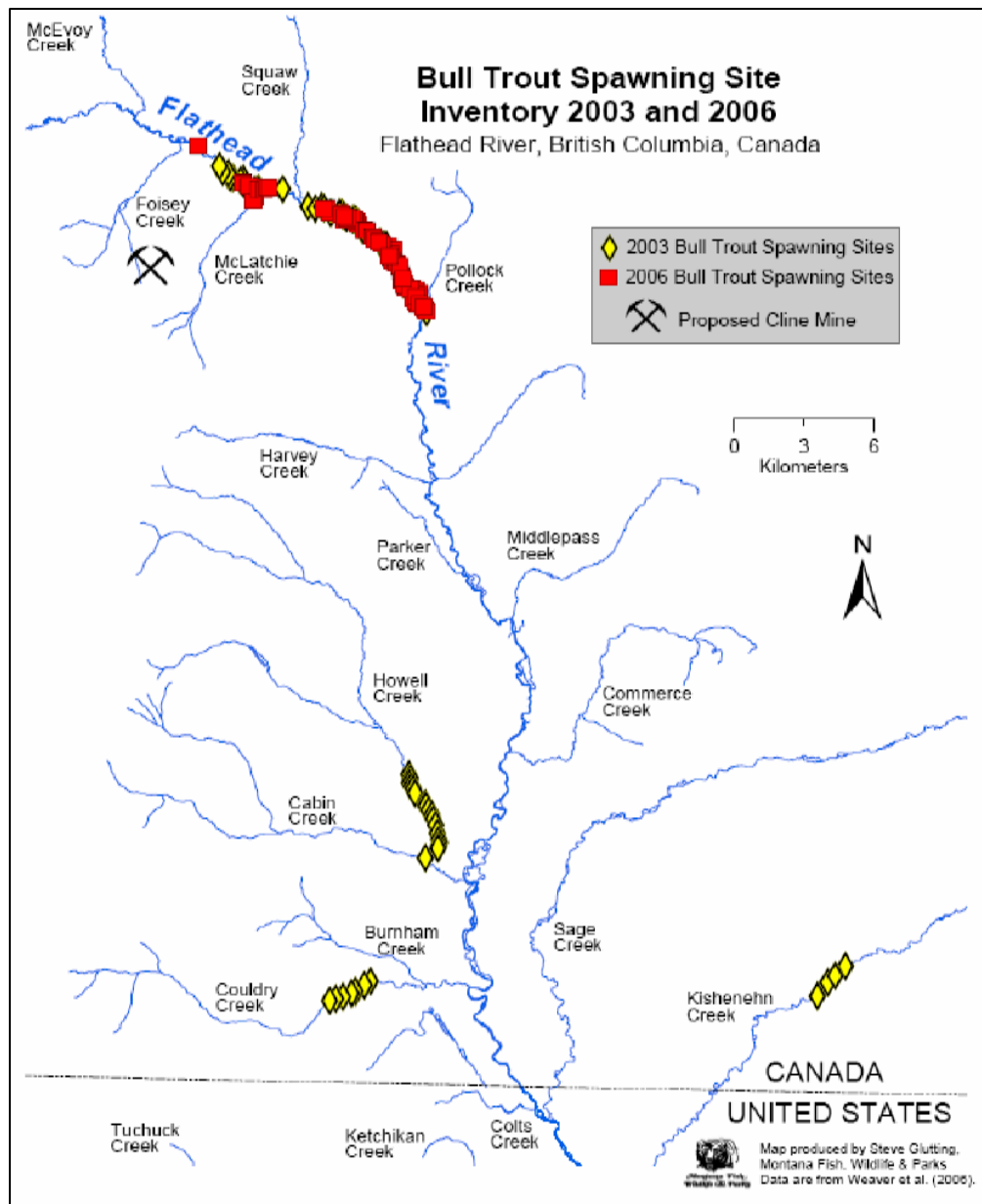


Figure 8. Inventory of spawning sites of bull trout in 2003 and 2006. Montana Fish, Wildlife and Parks 2006. Available at: <http://flatheadbasincommission.org/maps.html>.

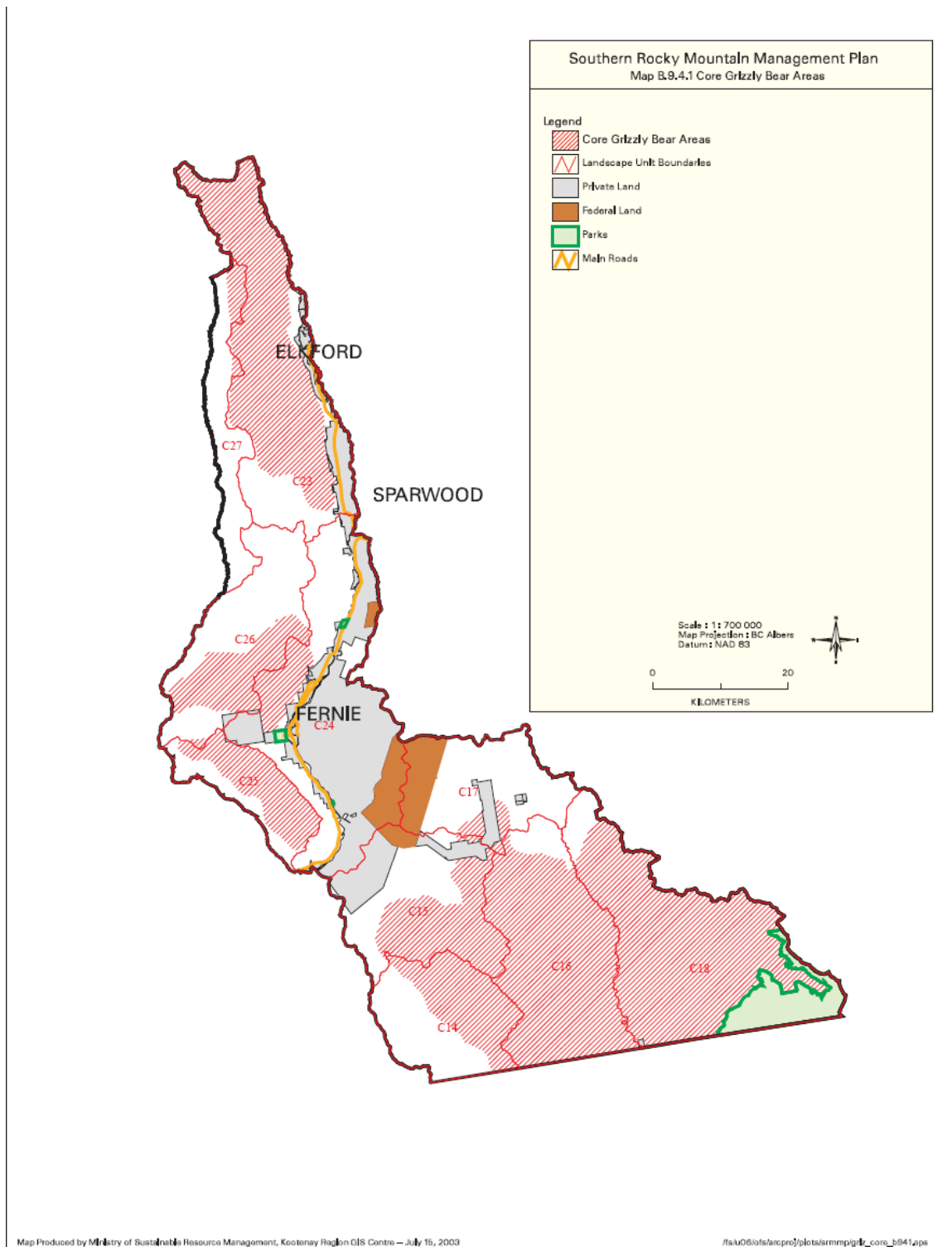


Figure 9. British Columbia Southern Rocky Mountain Management Plan 2003, with Core Grizzly Bear Areas in red. Available at: http://ilmbwww.gov.bc.ca/slrp/srmp/south/srmp/plan/cabinet/b_9_4_1_griz.pdf.

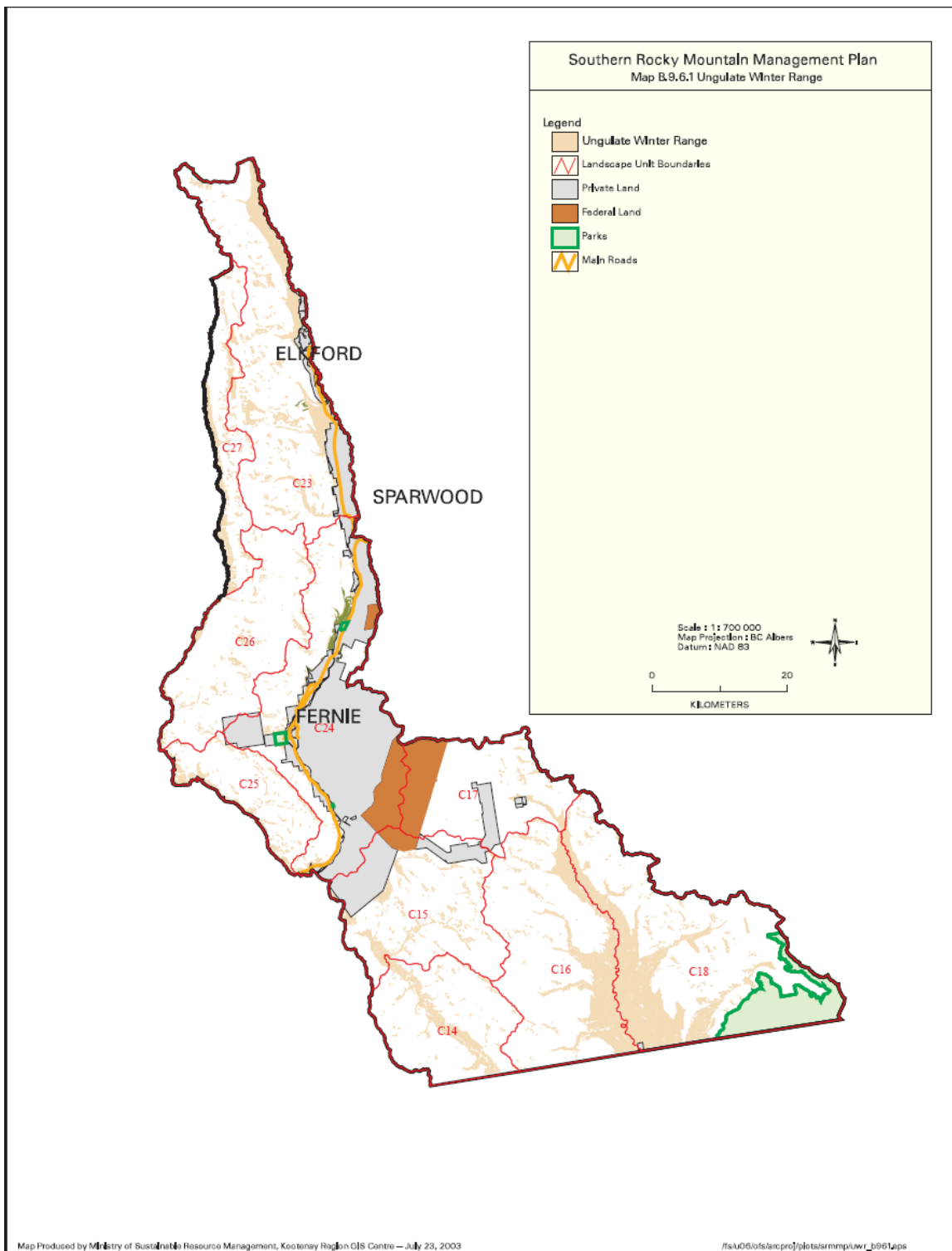


Figure 10. British Columbia Southern Rocky Mountain Management Plan 2003, indicating ungulate winter range. Available at: http://ilmbwww.gov.bc.ca/slrp/srmp/south/srmp/plan/cabinet/b_9_6_1_uwr.pdf

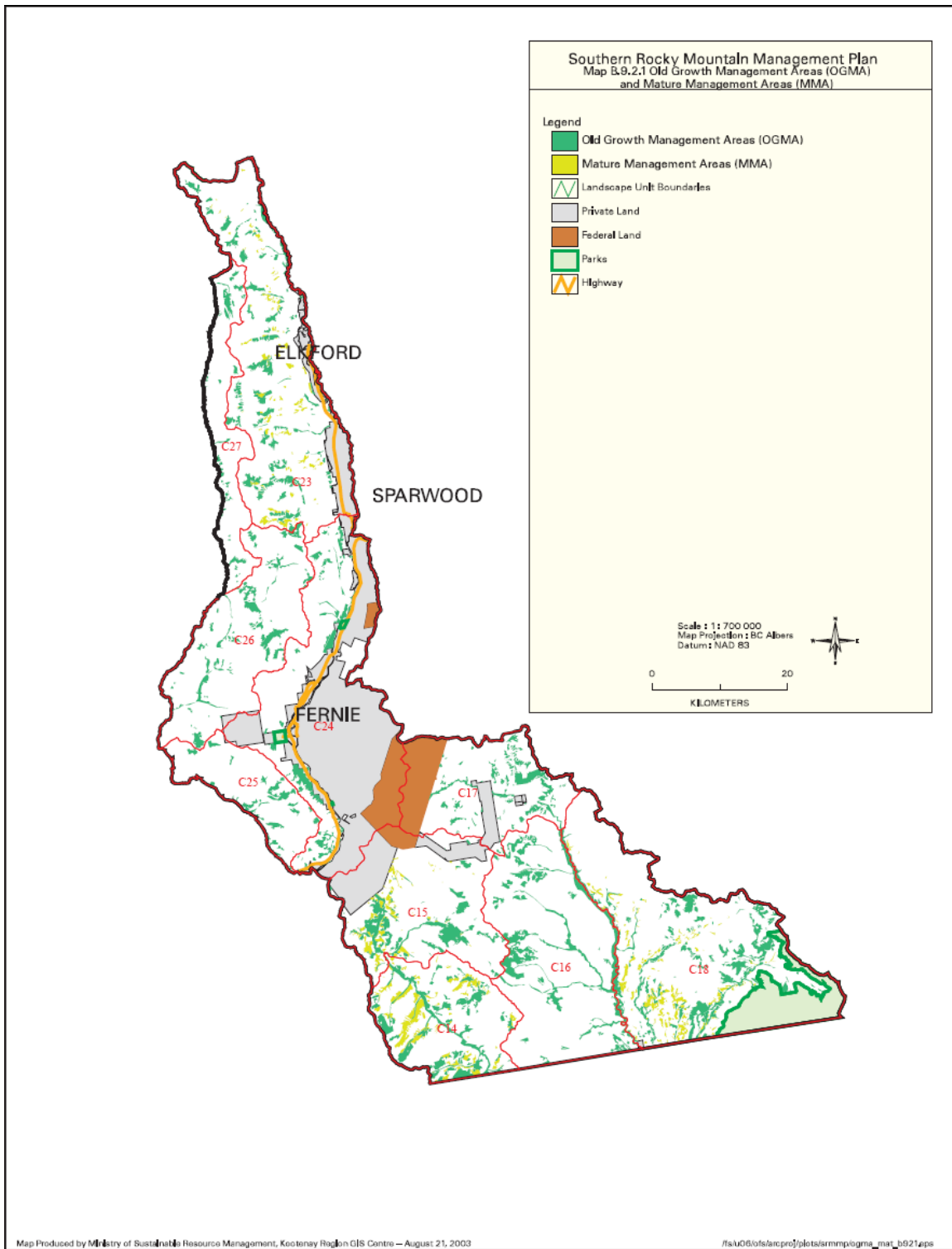


Figure 11. British Columbia Southern Rocky Mountain Management Plan 2003, indicating Old Growth Management Areas. Available at: http://ilmbwww.gov.bc.ca/slrp/srmp/south/srmp/plan/cabinet/b_9_2_1_ogma.pdf

CLINE MINING CORPORATION LOGGEPOLE PROPERTY

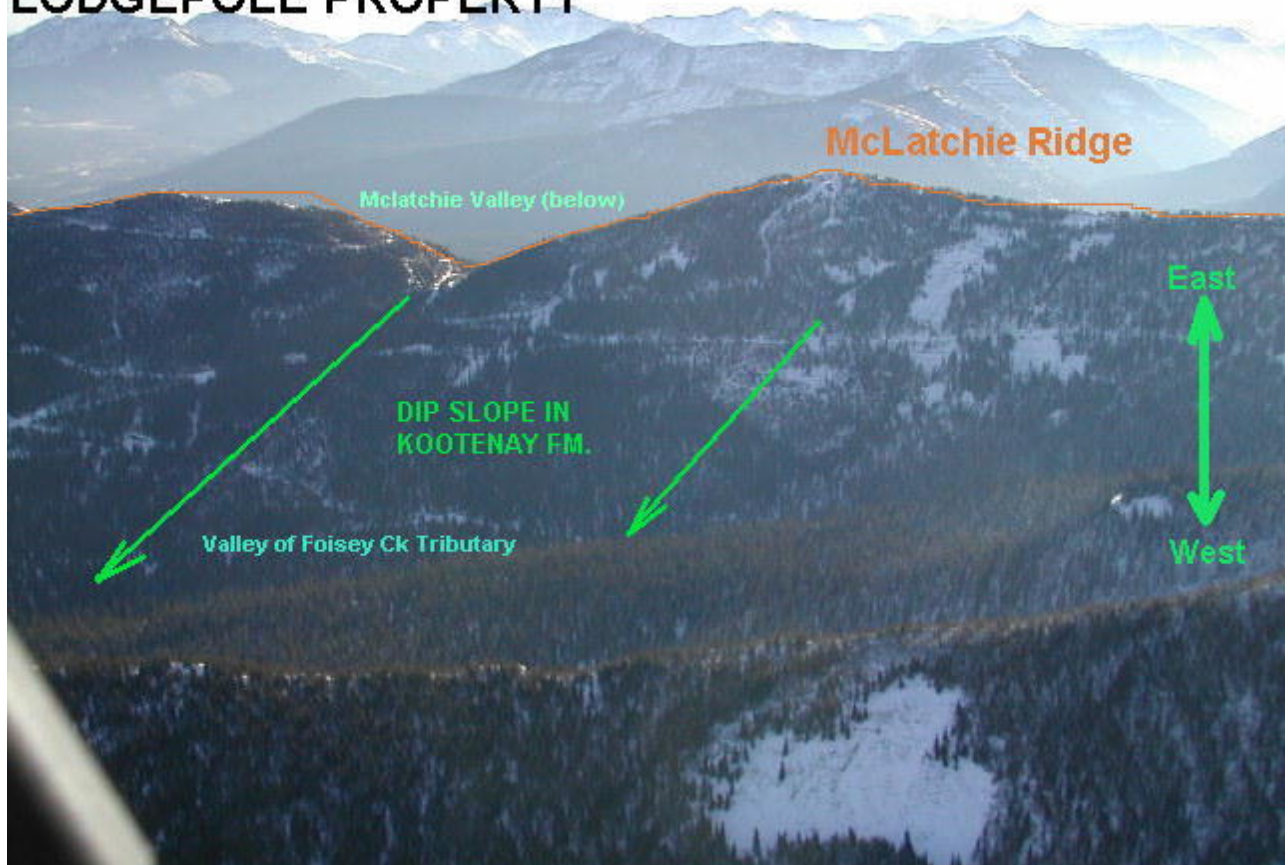


Figure 12. Location of the proposed Lodgepole open-pit coal mine. From Cline Mining Corp.
Available at: <http://www.clinemining.com/projects/coal/enlarge-lp-aerial3.html>.

CLINE MINING CORPORATION LOGGEPOLE PROPERTY

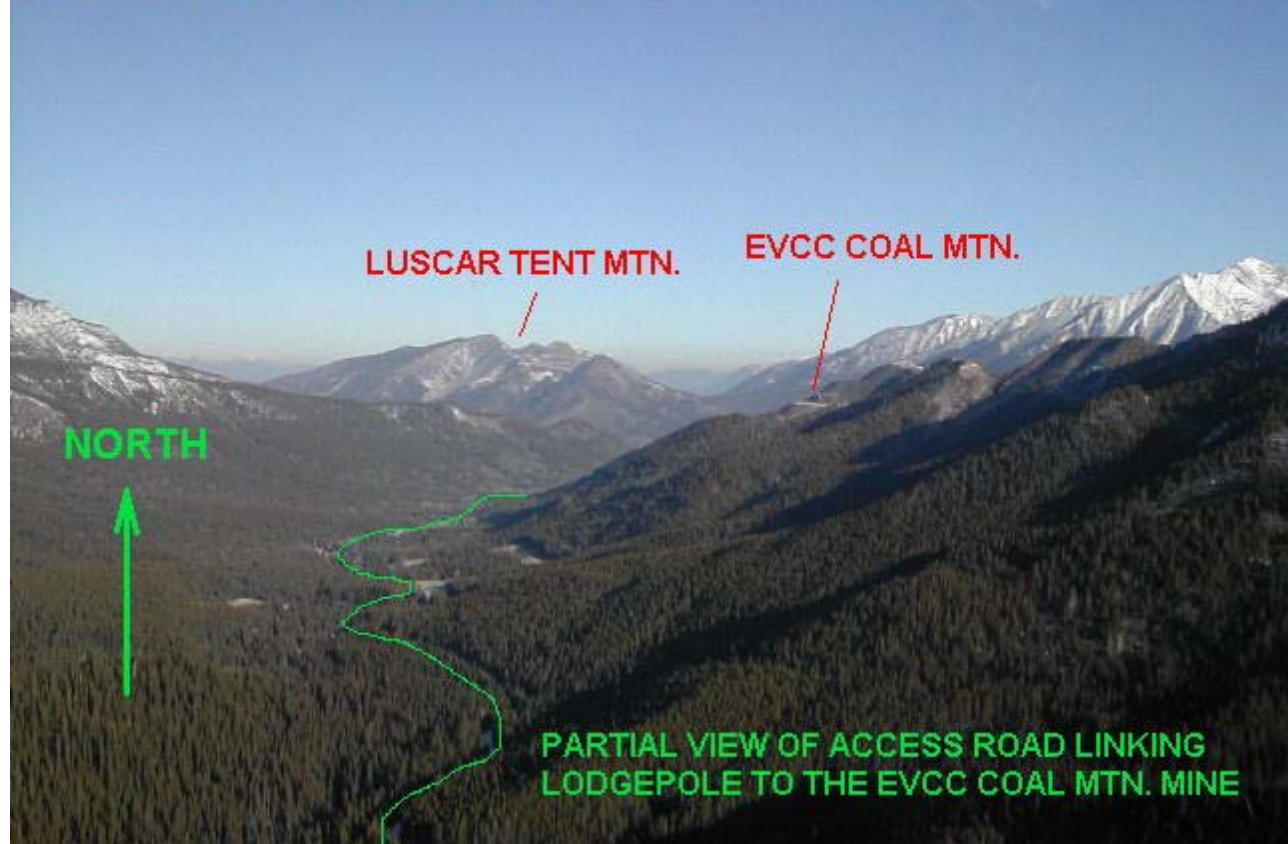


Figure 13. Landscape context of the proposed Lodgepole open-pit coal mine. From Cline Mining Corp. Available at: <http://www.clinemining.com/projects/coal/enlarge-lp-aerial3.html>.

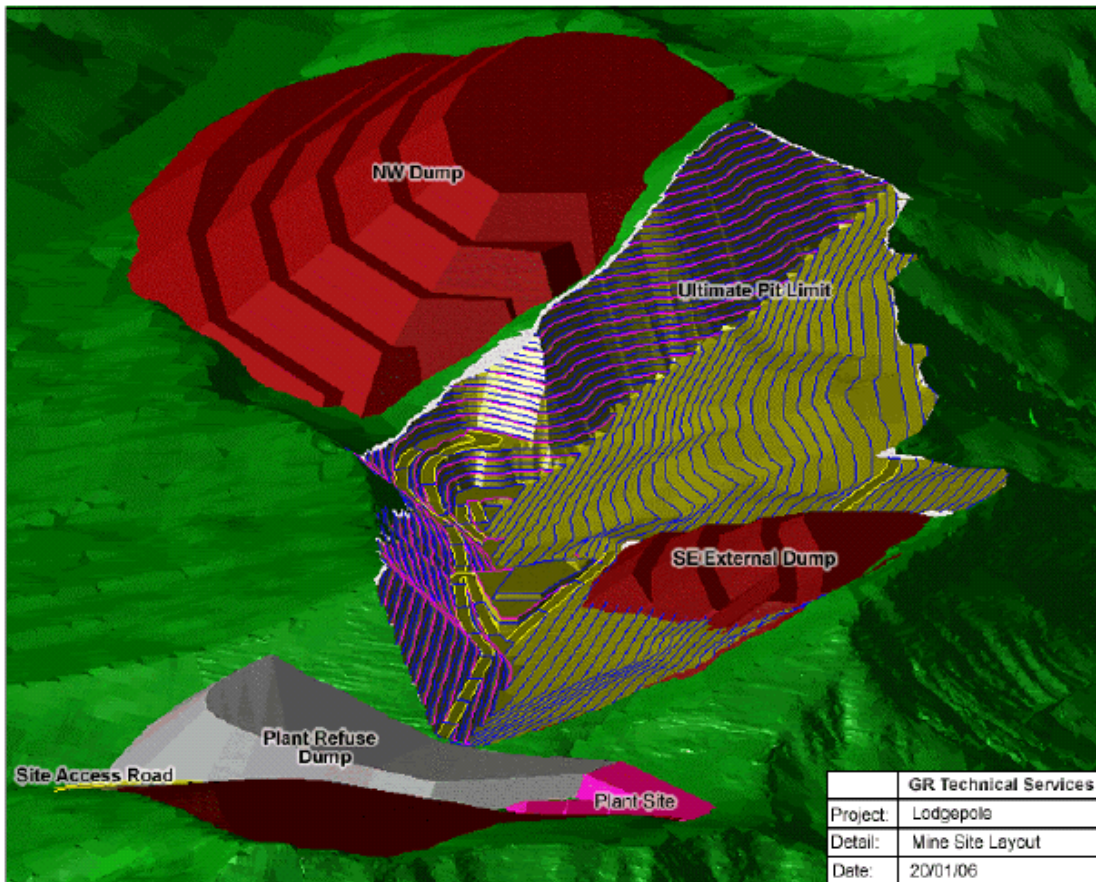


Figure 14. Proposed mine site layout of the Lodgepole open-pit coal mine.
 From: Cline Mining Corp. Technical Report: Resources and Reserves of the Lodgepole Coal Property, prepared by GR Technical Services (February 22 2006) at p 181. Available at: <http://www.clinemining.com/projects/pdf/lodgepole-43-101-technical-report.pdf>

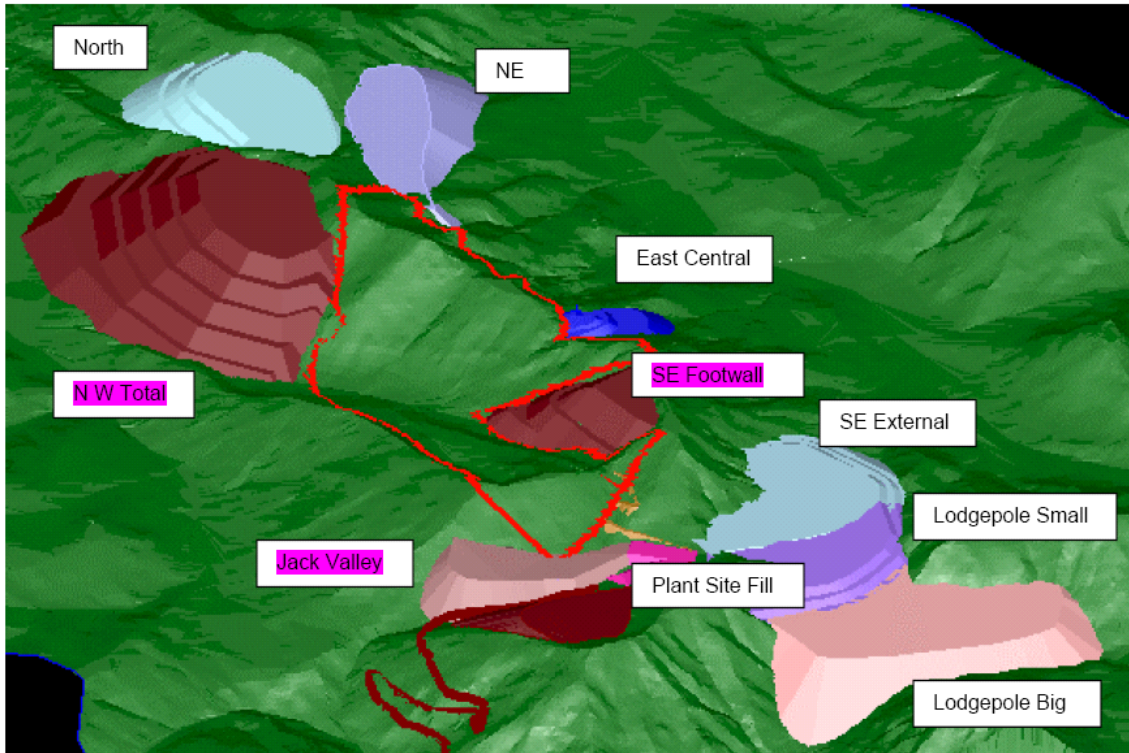


Figure 15. The proposed base plan and alternate waste dumps for the Lodgepole Coal Mine. From: Cline Mining Corp. Technical Report: Resources and Reserves of the Lodgepole Coal Property, prepared by GR Technical Services (February 22 2006) at p.187. Available at: <http://www.clinemining.com/projects/pdf/lodgepole-43-101-technical-report.pdf>

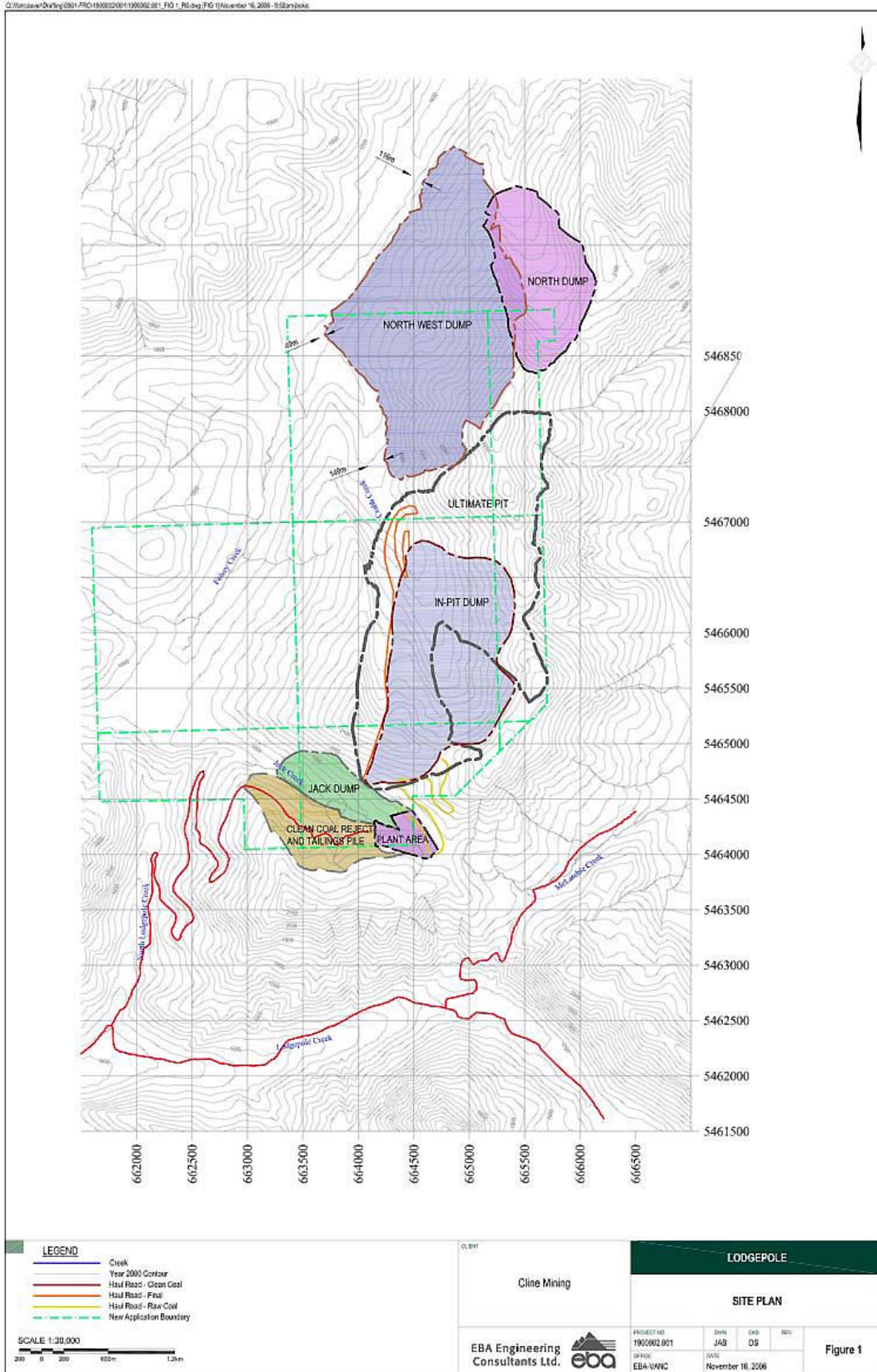


Figure 16. Lodgepole Site Map, as of November 2006.
Available at: <http://flatheadbasincommission.org/maps.html>.

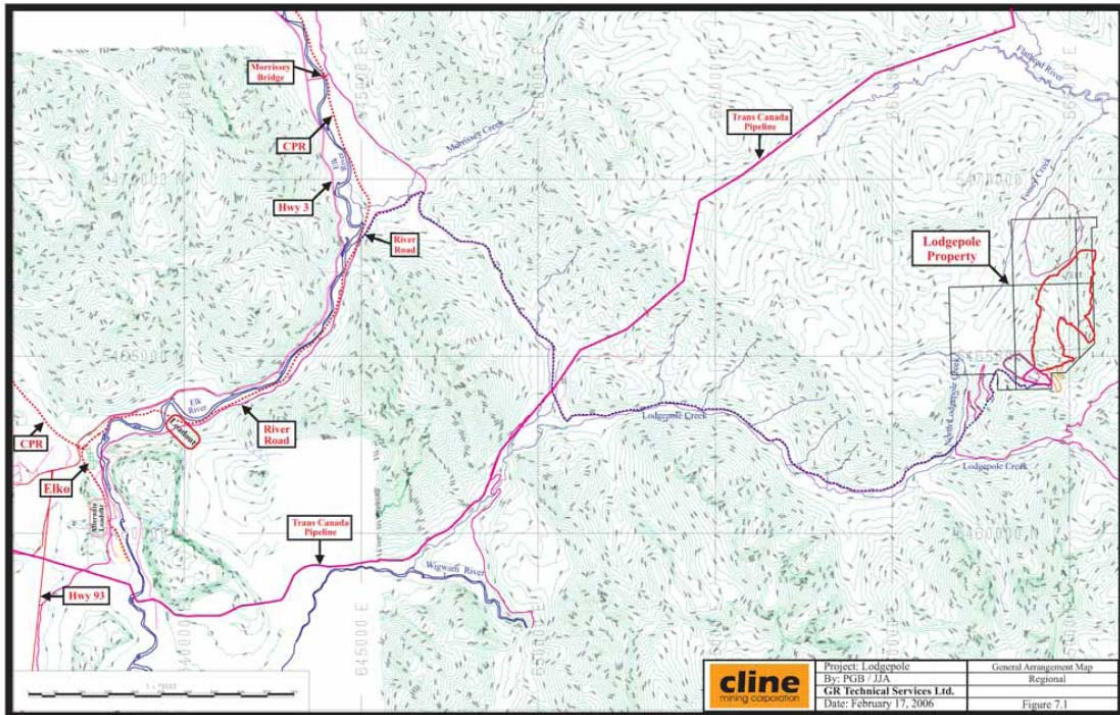


Figure 17. Lodgepole mine proximity to roads and pipelines. From: Cline Mining Corp. Technical Report: Resources and Reserves of the Lodgepole Coal Property, prepared by GR Technical Services (February 22 2006). Available at: <http://www.clinemining.com/projects/pdf/lodgepole-43-101-technical-report.pdf>

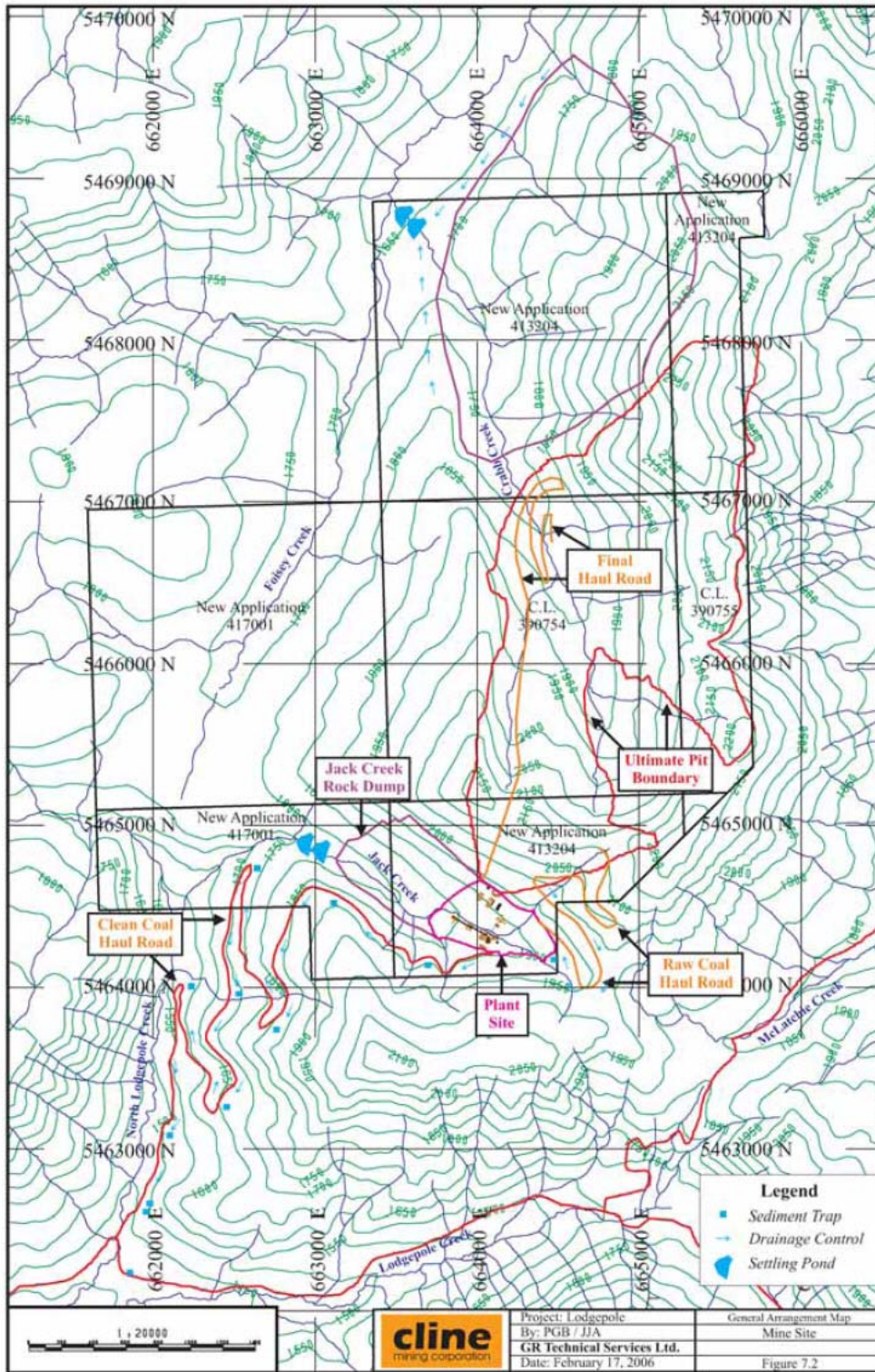


Figure 18. The proposed Lodgepole mine site, facilities and access roads. From: Cline Mining Corp. Technical Report: Resources and Reserves of the Lodgepole Coal Property, prepared by GR Technical Services (February 22 2006). Available at: <http://www.clinemining.com/projects/pdf/lodgepole-43-101-technical-report.pdf>

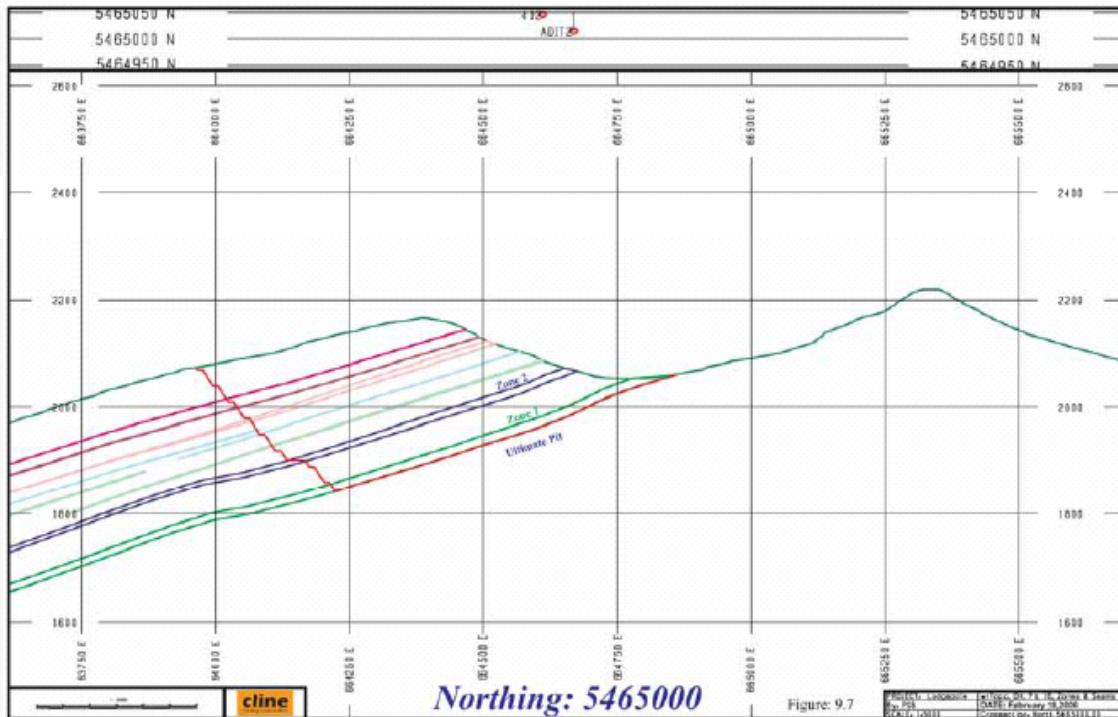


Figure 19. Cross section of Cline Mine, with red line showing the extent of mountain-top removal. From: Cline Mining Corp. Technical Report: Resources and Reserves of the Lodgepole Coal Property, prepared by GR Technical Services (February 22 2006).

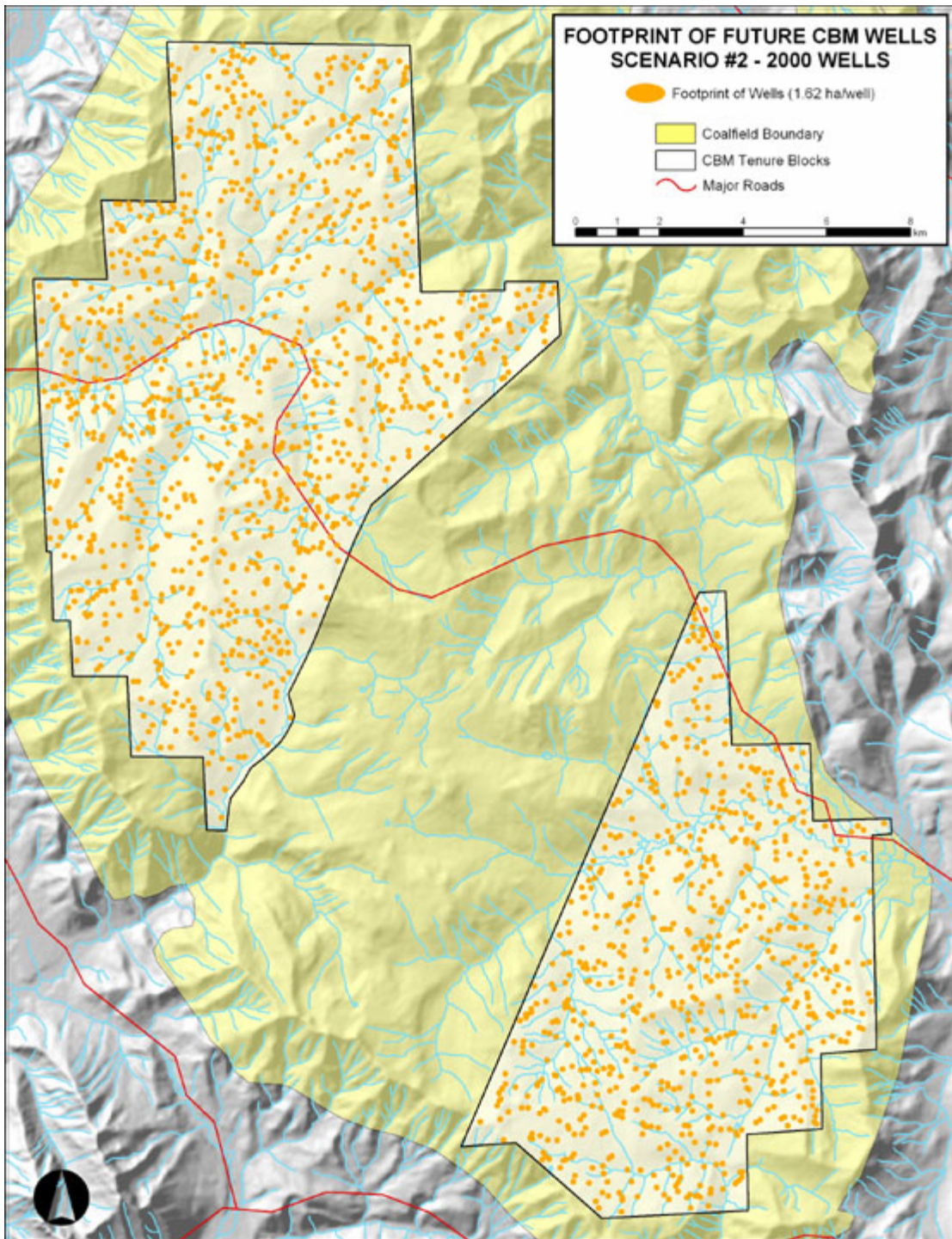


Figure 20. Potential footprint of coalbed methane wells in the Crowsnest coalfields, in a 2000 well scenario. Available at: <http://flatheadbasincommission.org/transboundary/maps/maps.html>.

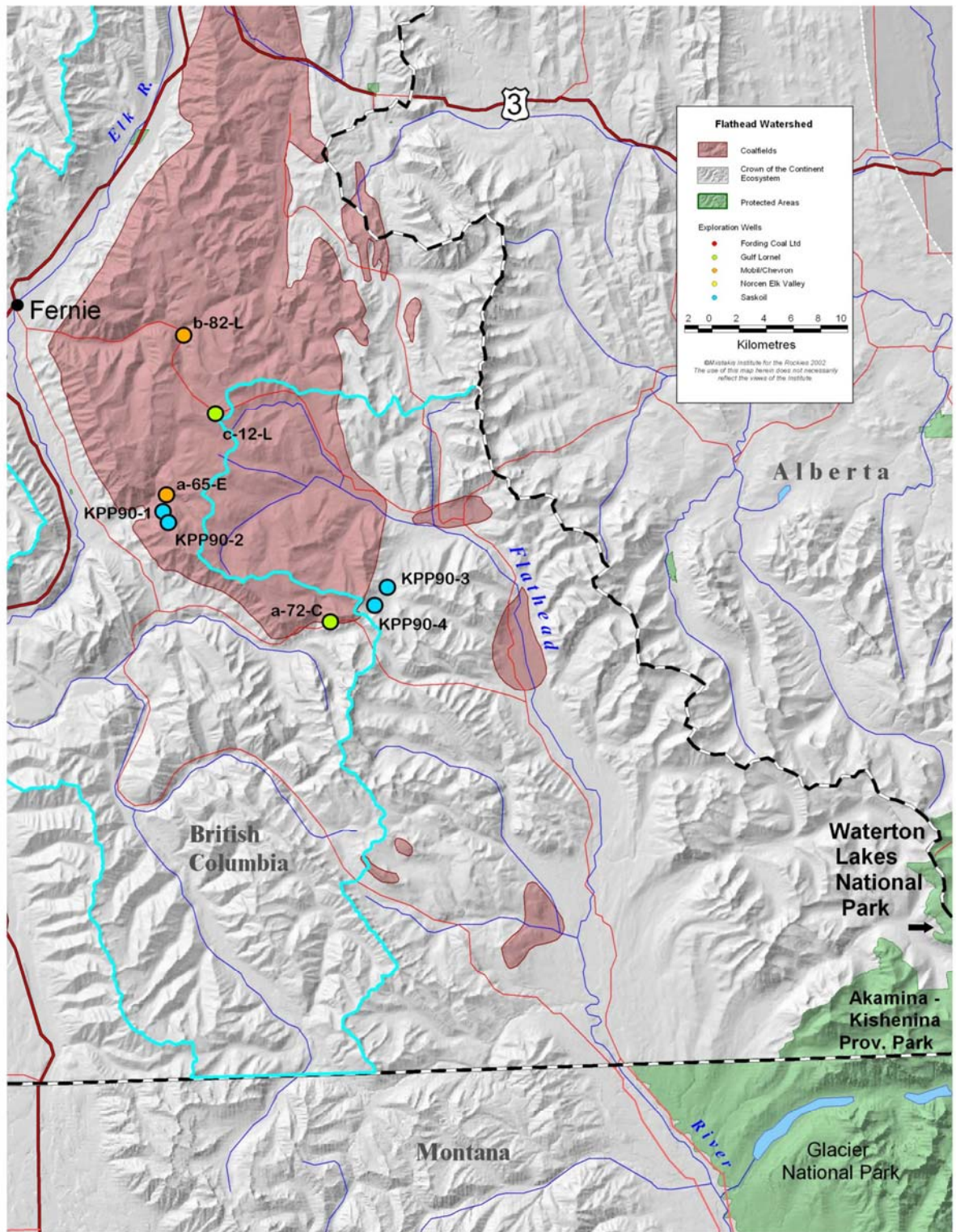


Figure 21. Location of existing coalbed methane test wells in the Flathead headwaters. Available at: <http://flatheadbasincommission.org/transboundary/maps/CrowsnestCoalfieldBC-FH.jpg>.

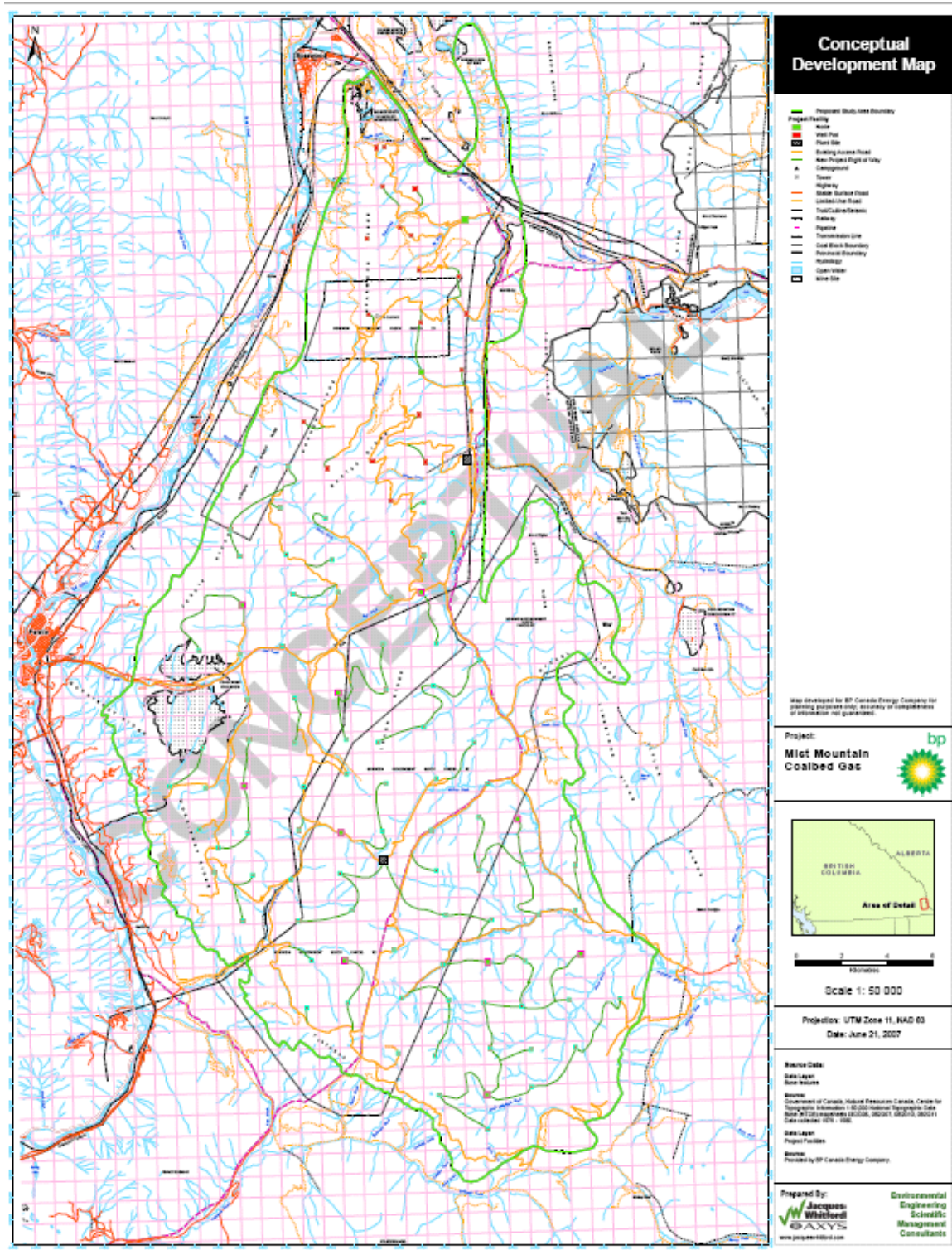


Figure 22. BP's proposed Mist Mountain coalbed methane conceptual plan, with green lines indicating new roads, and red squares indicating well pads. Available at: http://flatheadbasincommission.org/transboundary/cbm/bp_internal_documents/maps/Conceptual_Plan.pdf