

**ATTACHMENT 1**  
**to Amended Complaint**  
**No. 4:13-cv-450DPM**



Big Creek

C&H Hog Facility

Mount Judea School

**C&H HOG FACILITY**  
**Manure Application Fields**  
**1 -17**  
**In Big Creek Watershed**

Based on Information from C&H  
 Hog Facility's Nutrient Management  
 Plan

Scale = 0.5 mile

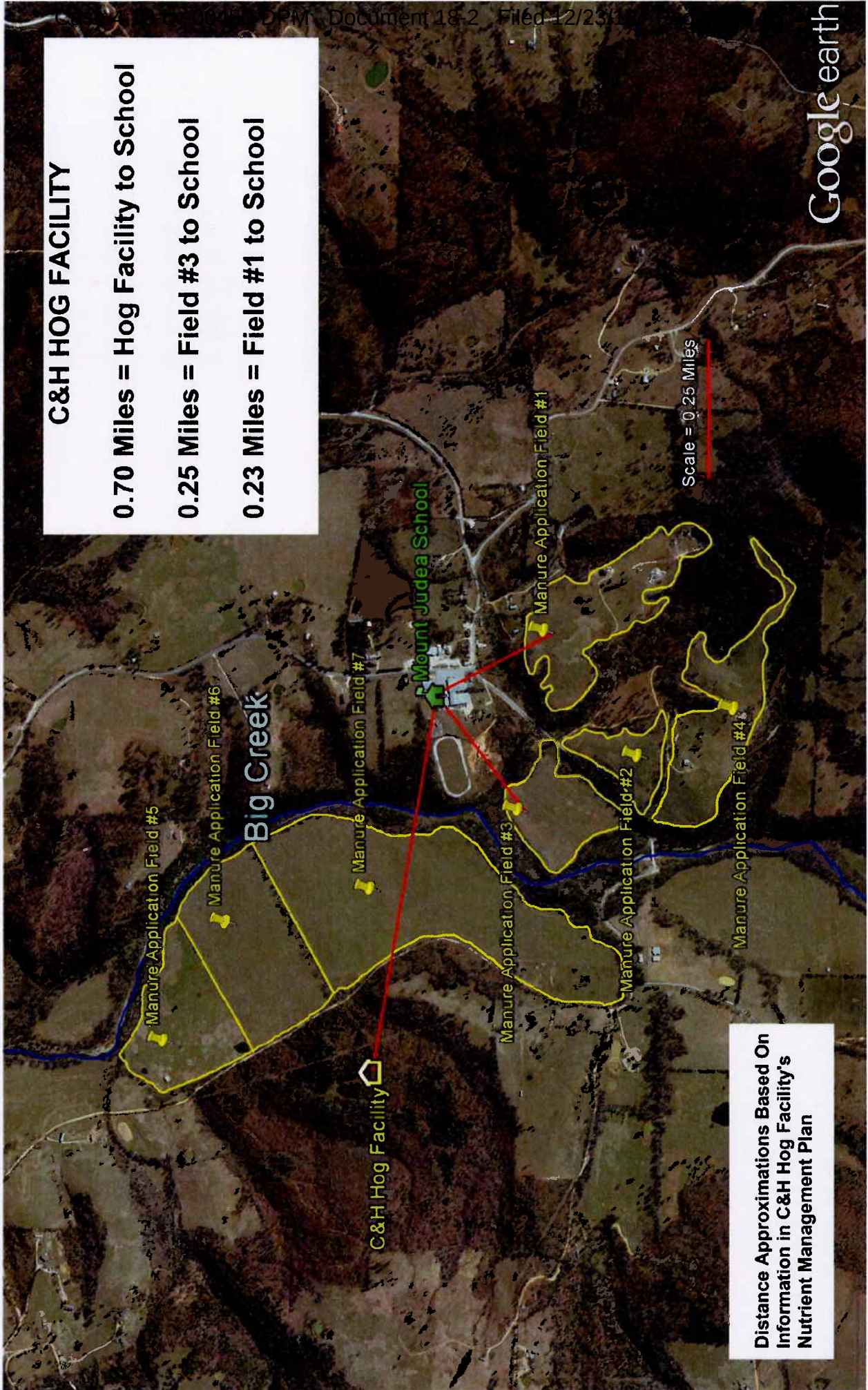
**ATTACHMENT 2**  
**to Amended Complaint**  
**No. 4:13-cv-450DPM**

**C&H HOG FACILITY**

**0.70 Miles = Hog Facility to School**

**0.25 Miles = Field #3 to School**

**0.23 Miles = Field #1 to School**



Scale = 0.25 Miles

**Distance Approximations Based On Information in C&H Hog Facility's Nutrient Management Plan**