

# Proposed Offshore Seismic, Leasing, and Drilling in Arctic Ocean

## MMS Chukchi OCS Development Scenarios

- Possible LNG Facility
- Possible Shorebase
- Possible Offshore Platform
- - - Possible Oil and Gas Pipelines
- - - Possible Oil and LNG Tanker Route

## Permitted Seismic Exploration

- (3-D Open Water) ConocoPhillips - 2006
- (3-D Open Water) Shell Oil - 2007
- (3-D On-Ice) Shell Oil - 2007
- (2-D Streamer Survey) GXT - 2008

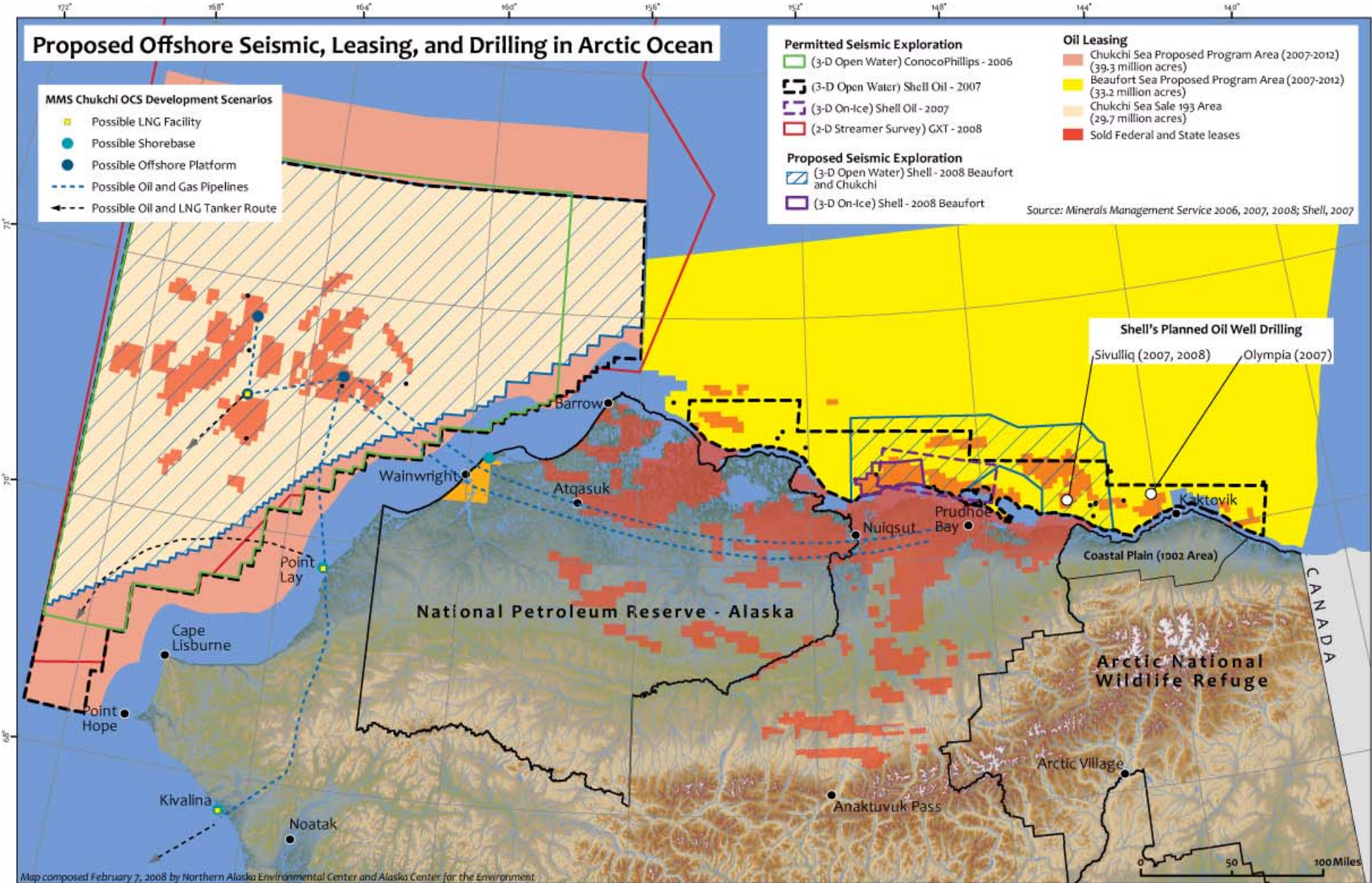
## Proposed Seismic Exploration

- (3-D Open Water) Shell - 2008 Beaufort and Chukchi
- (3-D On-Ice) Shell - 2008 Beaufort

## Oil Leasing

- Chukchi Sea Proposed Program Area (2007-2012) (39.3 million acres)
- Beaufort Sea Proposed Program Area (2007-2012) (33.2 million acres)
- Chukchi Sea Sale 193 Area (29.7 million acres)
- Sold Federal and State leases

Source: Minerals Management Service 2006, 2007, 2008; Shell, 2007



### Shell's Planned Oil Well Drilling

- Sivulliq (2007, 2008)
- Olympia (2007)

Map composed February 7, 2008 by Northern Alaska Environmental Center and Alaska Center for the Environment.