

# THE COAL ASH PROBLEM

PRESENTED BY EARTHJUSTICE



Hundreds of coal power plants burn over a billion tons of coal every year. **COAL ASH IS THE TOXIC BYPRODUCT.**

Coal ash is filled with **toxic levels** of multiple pollutants—which can **POISON DRINKING WATER SOURCES.**



**110**

MILLION  
Tons of coal ash generated each year



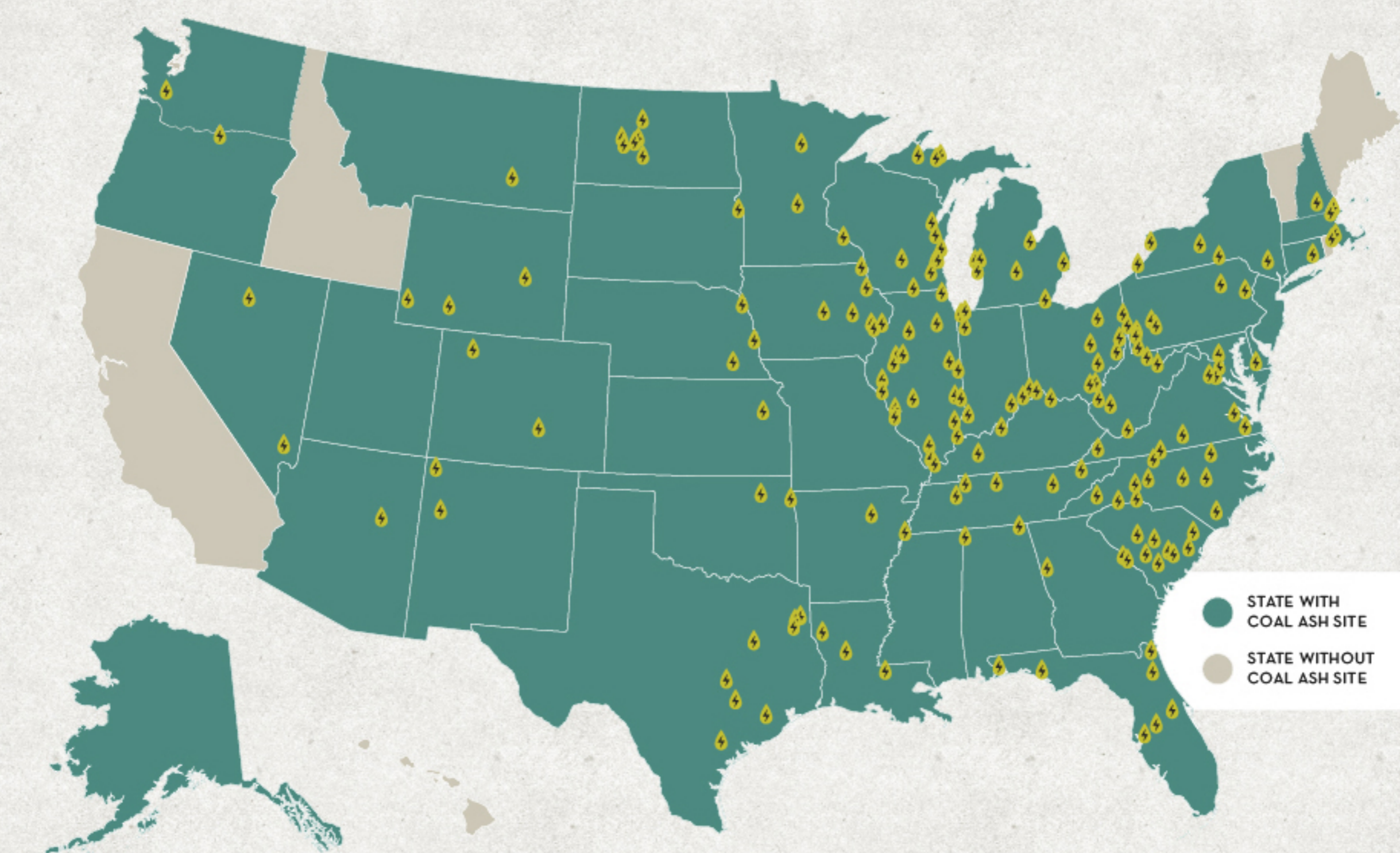
Enough to fill train cars stretching from the **NORTH POLE** to the **SOUTH POLE**



**1,425**  
coal ash sites  
in 37 states



coal ash dumps located in low income communities

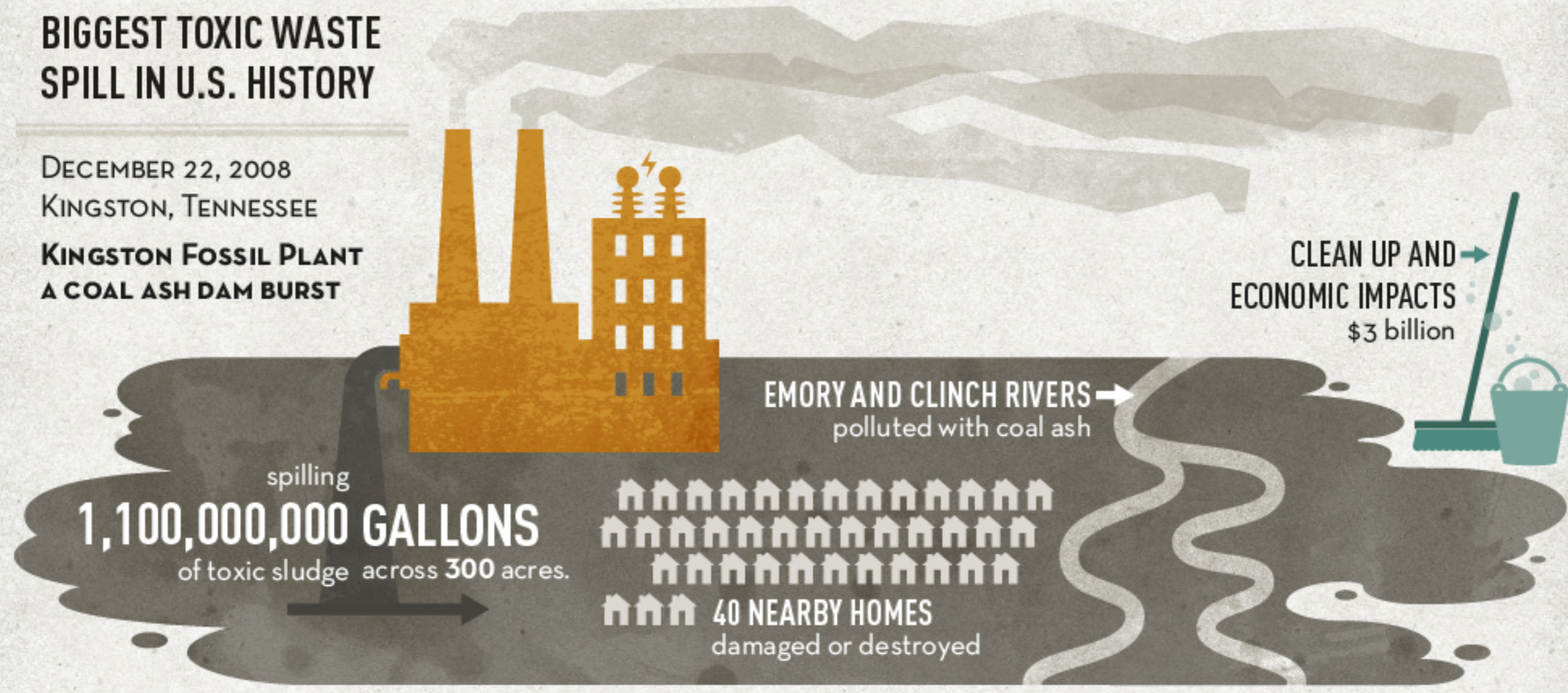


**MORE THAN 200** coal ash sites have contaminated nearby waters. Local communities use these waterways as sources of drinking water.

COAL ASH POLLUTANT	HEALTH IMPACTS						
	INGESTION		INHALATION	ABSORPTION			
<p><b>As<sup>33</sup></b> 74.92159 ARSENIC</p>	nervous system damage	cardiovascular issues	urinary tract cancers	lung cancer	skin cancer		
<p><b>Hg<sup>80</sup></b> 200.59 MERCURY</p>	EXPOSURE						
	POSES PARTICULAR RISK TO CHILDREN INFANTS, AND FETUSES		nervous system damage	developmental defects like reduced IQ and mental retardation			
<p><b>Pb<sup>82</sup></b> 207.2 LEAD</p>	EXPOSURE						
	THERE IS NO SAFE LEVEL OF LEAD EXPOSURE, PARTICULARLY FOR CHILDREN		brain swelling	kidney disease	cardiovascular problems	nervous system damage	death
<p><b>Cr<sup>24</sup></b> 51.996 CHROMIUM</p>	INGESTION		FREQUENT INHALATION				
	stomach ulcers	intestinal ulcers	stomach cancer	anemia	asthma	wheezing	lung cancer

## BIGGEST TOXIC WASTE SPILL IN U.S. HISTORY

DECEMBER 22, 2008  
KINGSTON, TENNESSEE  
**KINGSTON FOSSIL PLANT A COAL ASH DAM BURST**



## 309 HIGH AND SIGNIFICANT HAZARD COAL ASH DAMS

**ENVIRONMENTAL RISKS**  
Contamination of local rivers, lakes, streams or nearby farmlands and forests.

**ECONOMIC COSTS**  
Property damage to homes, cars, and cleanup costs to local communities.

Failure at any of these dams will result in **MAJOR DAMAGE** to the environment and human health, including possible **LOSS OF LIFE.**

**PUBLIC HEALTH THREATS**  
Exposure to toxic chemicals that could lead to serious injury or even death.

**THREATS TO FACILITIES**  
Damage to basic facilities and services such as phone and power lines, sewers, and roads.

